



RISO Printer Driver

USER'S GUIDE

for MZ Series

This document is intended for use by RISO, its authorized dealers and purchasers of the equipment described herein. While every effort has been made to insure the accuracy of information contained in this document, RISO, its authorized dealers and their employees shall not be held responsible for any inaccuracies it may contain.

ALL SPECIFICATIONS ARE SUBJECT TO CHANGE WITHOUT NOTICE.

The screens used in this manual are now under development. Therefore, they might be different from the actual screens.

Reproduction or copying of this manual or any parts without permission is strictly prohibited. Although every effort has been made to ensure that the contents of this manual are error-free, please contact us if you notice any errors or other points which should be brought to the company's attention.

Copyright © 2005 RISO KAGAKU CORPORATION, JAPAN

- Apple®, Macintosh® and Mac OS® are trademarks of Apple Computer, Inc., registered in the U.S.A. and other countries.
- Microsoft® and Windows® are trademarks of Microsoft Corporation in the U.S.A. and other countries.
- Product names and company names that are referenced in this guide are (registered) trademarks of respective companies.

Preface

Welcome to the high-speed PC printing field presented by RISO printers through RISO printer drivers.

The RISO printers, which are designed to operate as a high-speed GDI printer, enable you to print various documents you create on different computer platforms very speedily, only if an appropriate RISO printer driver is installed in your computer.

The GDI printer, as you know, uses the bit-mapped image data developed on your PC monitor screen as print data source, enabling you to print the exactly same image as of what you see on your PC monitor screen in most cases. Besides, it requires no printer font to print document, thus relieving you of the restrictions on the use of fonts when you create documents on your PC.

The RISO printers can also operate as a network printer under various LAN environments, with an additional network interface card embedded inside.

About this User's Guide

This user's guide is divided into the individual sections for the following different computer system platforms : Windows (98SE/2000/XP) and Macintosh.

In each section, you can find detailed descriptions about how to install the printer driver into your computer and print documents created on your computer.

Besides, the troubleshooting tips are provided to help you in case you have any problem in printing operation.

Read the section which corresponds to your computer system platform before printing your document file on your RISO printer or whenever you have questions in operation.

The expressions which are used in the UK-ENGLISH printer driver program and different from those used in the US-ENGLISH one are given in the brackets.

About the Guide Signs

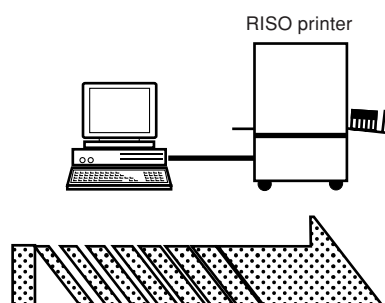
The following advice signs are given to the descriptions which will help a user to avoid unexpected troubles and obtain the optimum performance of this product.

- **Important !**
Gives you helpful advice for trouble-free operation.
- **NOTE** Gives you tips for more effective use of this product.

Procedure before printing

Before you use the printer at the first time, carry out the installation procedure below.
After installation, follow the basic operation procedure. Then, you can print out the documentation data.

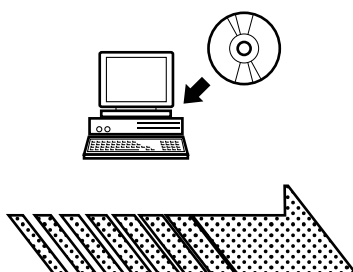
Installation (When the printer is used at the first time)



1 Connecting your computer with the RISO printer

Connect your computer with the RISO printer.

- Read the user's guide of the RISO printer thoroughly.

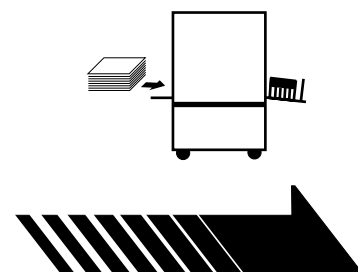


2 Installing the printer driver

Install the RISO Printer Driver into your computer.

Windows 98SE ➞ [Page 8](#)
Windows 2000/XP ➞ [Page 13](#)
Mac OS X ➞ [Page 19](#)

Basic operation

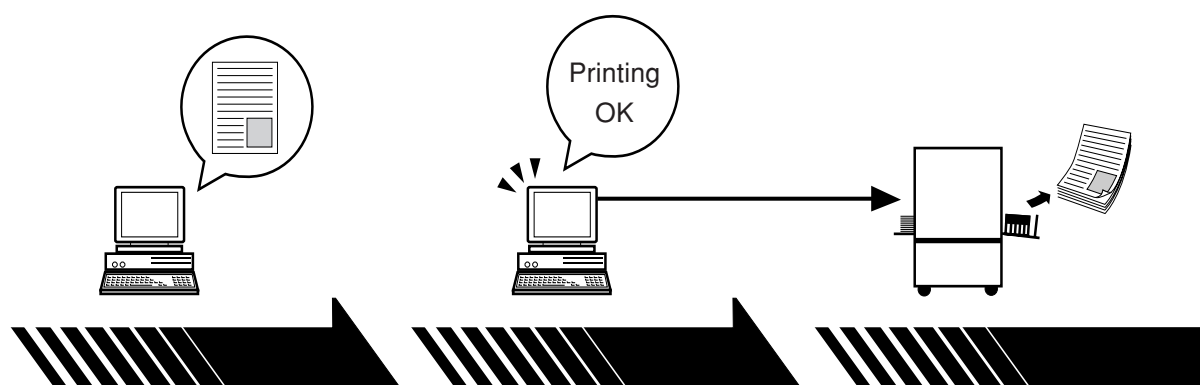


1. Preparing for the printer

Prepare for the printer and put the print paper suitable for the original data to be printed out onto the standard (multipurpose) tray.

- For the preparation method for the printer, read the user's guide of the RISO printer.

Basic operation



2. Setting

Open the data you want to print out with your computer and make settings for printing.

Windows

 [Page 27](#)

Mac OS X

 [Page 45](#)

3. Printing

Open the [Print] dialog box on your PC and click on the [OK] button. The data is transmitted to the printer.

4. Completion of printing

The printer receives the data and makes master and prints out the data.

Table of Contents

Preface	2
Procedure before printing	3
Table of Contents	5

Before Starting to Use

■ Printer Driver for Windows	8
Installing the Printer Driver <Windows 98SE>	8
Installing the Printer Driver <Windows 2000/XP>	13
■ Printer Driver for Mac OS X	18
Connecting with Macintosh	18
Installing the Printer Driver <Mac OS X>	19
Add the printer to the printer list	20
Finding Version Number of the Printer Driver	21

Working with the Printer Driver

■ Printer Driver for Windows	24
Sending and Printing Data	24
Setting the Print Conditions	27
[Guide] Tab	27
[Coloring] Tab	32
[Image] Tab	35
[Extensions] Tab	37
Changing the Printer Driver Configuration	39
Creating a RISORINC-format file	44
■ Printer Driver for Mac OS X	45
Sending and Printing Data	45
Register frequently used custom paper size	47
Dialog Box Settings	49
Mac OS settings	49
Copies & Pages	49
Layout	50
Output Options	51
Scheduler	51
Paper Handling	52
Color Sync	52
RISO Printer Driver Settings	53
Printer Setup	53
Storage Tag	55
Coloring	56
Printer Options	60
Photo processing	62
Program Printing	63
Summary	63
Changing the Printer Driver Configuration	64
Configuration	64
Print Color Entry	65
Color information reference	65

Appendix

Troubleshooting Tips	68
Error Message on PC's Display	68
Operation Problems	69

Before Starting to Use

■ Printer Driver for Windows	8
Installing the Printer Driver	
<Windows 98SE>	8
Installing the Printer Driver	
<Windows 2000/XP>	13
■ Printer Driver for Mac OS X	18
Connecting with Macintosh	18
Installing the Printer Driver	
<Mac OS X>	19
Add the printer to the printer list	20
Finding Version Number of the	
Printer Driver	21

Printer Driver for Windows

Installing the Printer Driver <Windows 98SE>

You are required to install, in your computer, the corresponding RISO printer driver that enables document data printout on your RISO printer. Refer to the Windows98SE manuals for more instructions to install the printer driver.

This installation procedure assumes that your computer is directly connected to a RISO printer. If you want to share the RISO printer with another computer over the network, on the other hand, you can select the sharing option of the Windows system. Refer to the Windows98SE manuals for details about the sharing option. Besides, the dedicated network interface card, RISORINC-NET, is also available as option, if you want to use your RISO printer on the network.

IMPORTANT!

- When you delete the existing RISO printer driver and re-install it, always reboot your computer before installing the program again.
- RISO printer driver system requirements:
64MB of RAM or more

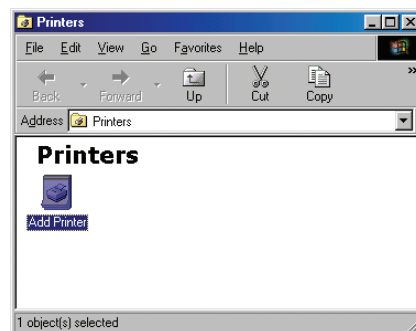
1

Turn on your computer and start Windows.

2

Open the [Printers] folder and start the [Add Printer Wizard].

Click on the [Start], [Settings], then [Printer] buttons to open the [Printers] folder shown below. Then double-click on the [Add Printer] icon to start the [Add Printer Wizard].

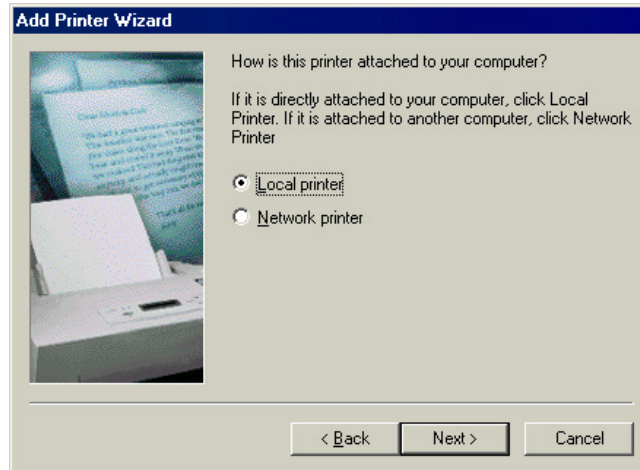


3**Select the printer's destination.**

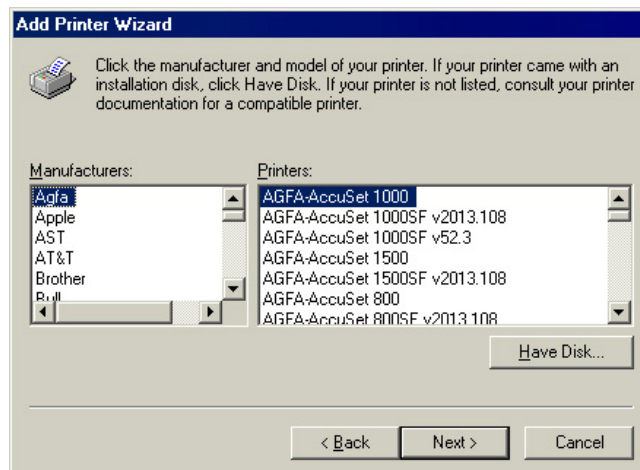
Click on the [Next] button and select [Local printer] as the printer's destination in the screen shown below. Then click on the [Next] button again.

IMPORTANT!

Even if your RISO printer is connected on network, select [Local printer] here.

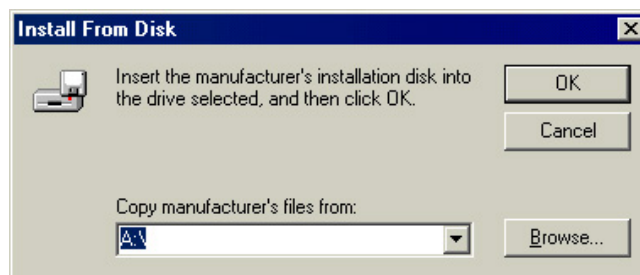
**4****Open the path for the additional printer driver.**

Click on the [Have Disk] button in the screen shown below. Then the [Install From Disk] dialog box will appear.

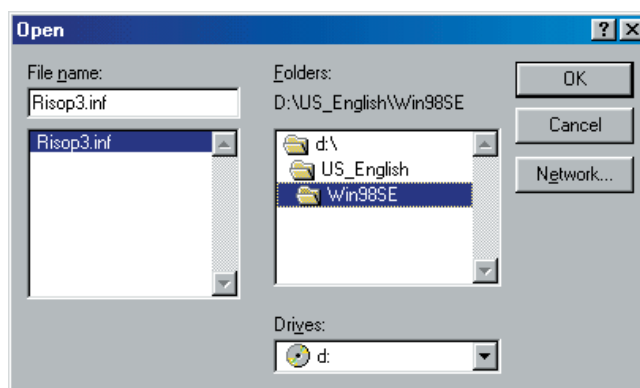


5**Insert the software CD-ROM.**

Insert the dedicated software CD-ROM in the CD-ROM drive and click on the [Browse] button in the screen shown below.

**6****Select the file with .inf extension from the printer driver software files to be installed.**

Select a desired CD-ROM drive from [Drive], select and open the [UK_English/US_English] - [Win98SE] folder from [Folders] list box. Select the file with .inf extension from the printer driver software files to be installed, and click on the [OK] button.

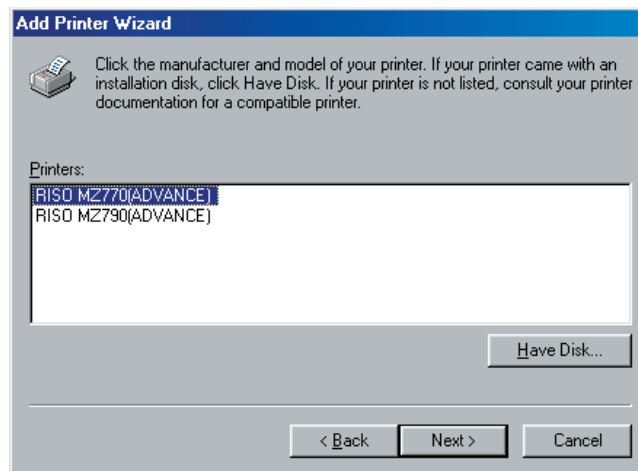
**7****The [Install From Disk] dialog box reappears with the name of the selected folder displayed.**

Confirm that the selected language is correct and click on the [OK] button. The [Add Printer Wizard] will then reappear.



8**Select a printer driver which corresponds to your RISO printer.**

Highlight a desired printer driver in the [Printers] box and click on the [Next] button.

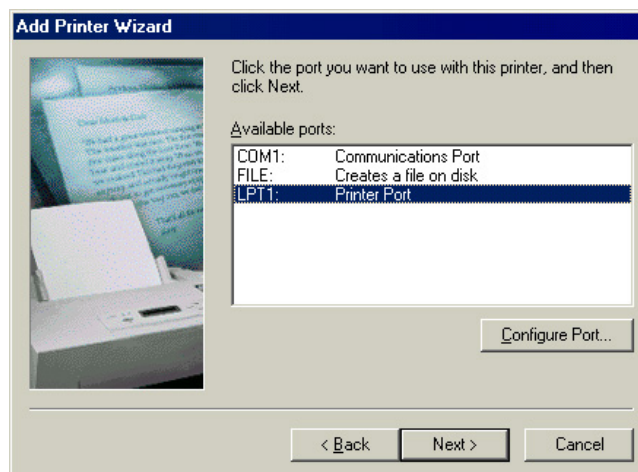
**9****Select the printer's port.**

When your RISO printer is connected to your computer with a parallel cable, select "LPT1" as the printer's port and click on the [Next] button.

When your RISO printer is connected on network, select the "RISO-PRINT Port" as the printer's port and click on the [Next] button.

NOTE The description above is the procedure for using the RISO genuine network card. If you connect the network using a commercial available print server or print server OS, follow the instruction manual of each corresponding manufacturer.

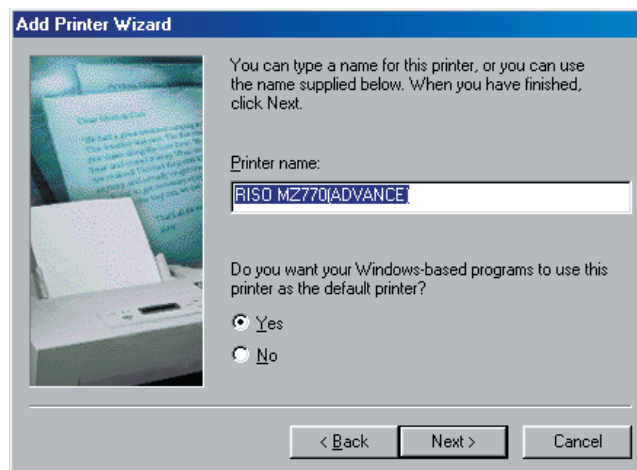
To create the "RISO-PRINT Port", refer to the RISORINC-NET User's Guide.



10

Check the name of the added printer and specify it as [Default Printer].

Confirm that the printer name you selected in Step 8 appears in the [Printer name] box as shown below, and select [Yes] in the section below to set it as the default printer. Then click on the [Next] button.

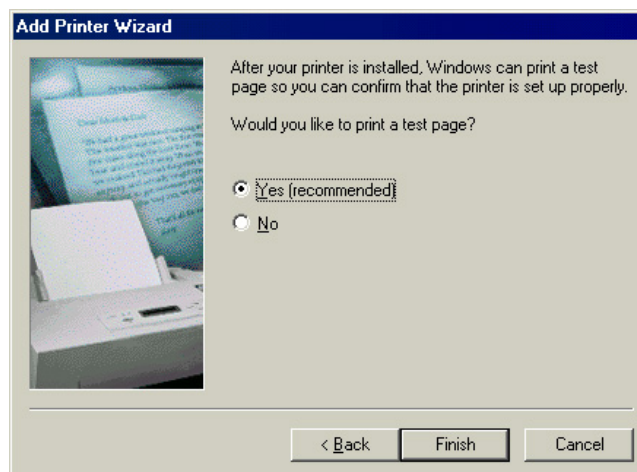


11

Select the [Test Page] option and install the printer driver's file from the CD-ROM.

Select [Yes] for the question, "Would you like to print a test page?", and click on the [Finish] button. Then, the printer driver's file is copied from the CD-ROM and a test page is printed out. To print out the test pages, turn on your RISO printer, and load paper (above A4/LETTER SIZE) before clicking on the [Finish] button.

If the printer driver is installed properly, the selected RISO printer icon appears in the [Printers] folder.



12

End the printer driver's installation.

After the test page is printed out, the checking window appears. Click on the [Yes] button in this window if the test page is properly printed, to finish the printer driver's installation. Then remove the CD-ROM out of the CD-ROM drive.

IMPORTANT!

Keep the CD-ROM in a safe location.

Installing the Printer Driver <Windows 2000/XP>

You are required to install, in your computer, the corresponding RISO printer driver that enables document data printout on your RISO printer. Refer to the Windows 2000/XP manuals for more instructions to install the printer driver.

This installation procedure assumes that your computer is directly connected to a RISO printer. If you want to share the RISO printer with another computer over the network, on the other hand, you can select the sharing option of the Windows system. Refer to the Windows 2000/XP manuals for details about the sharing option. Besides, the dedicated network interface card, RISORINC-NET, is also available as option, if you want to use your RISO printer on the network.

IMPORTANT!

- You are required to have the administrator's privilege to install the printer driver program in your computer.
- When you delete the existing RISO printer driver and re-install it, always reboot your computer before installing the program again.
- RISO printer driver system requirements:
Windows 2000 128MB of RAM or more.
Windows XP 192MB of RAM or more.

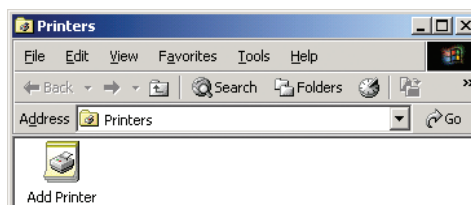
1

Turn on your computer and start Windows.

2

Open the [Printers] folder and start the [Add Printer Wizard].

Click on the [Start], [Settings], then [Printer] buttons to open the [Printers] folder shown below. Then double-click on the [Add Printer] icon to start the [Add Printer Wizard].



3

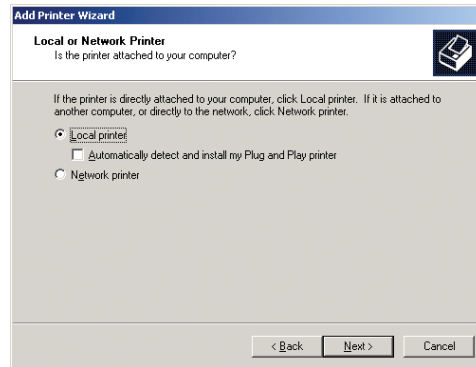
Select the printer's manager.

Click on the [Next] button and select [Local Printer] as the printer's manager in the screen shown below. Then click on the [Next] button again.

IMPORTANT!

Even if your RISO printer is connected on network, select [Local printer] here.

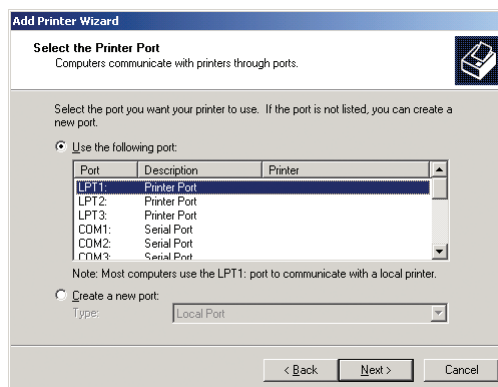
However, if you use the NetBEUI, you can click on the [Network printer], proceed to the next screen, specify a printer and install it.



4

Select the printer port.

When your RISO printer is connected to your computer with a parallel cable, click on the check box of "LPT1" as the printer's port and click on the [Next] button.



When your RISO printer is connected on network, add a network print port i.e. Standard TCP/IP port.

- **On Windows 2000/XP, add a Standard TCP/IP port following the procedure below.**

- 1) Select [Create a new port] and display [Standard TCP/IP Port] in the [Type] field there. Then click on the [Next] button.
- 2) Proceed to the next screen and enter the IP address of the RISO printer whose printer driver program is to be installed. Then click on the [Next] button again.

NOTE

The [Port Name] field is automatically filled according to the IP address entered.

The description above is the procedure for using the RISO genuine network card. If you connect the network using a commercial available print server or print server OS, follow the instruction manual of each corresponding manufacturer.

After the LPR function is added, your computer requires restarting. Therefore, be sure to store the necessary data in your computer before carrying out the operation. Follow the instruction manual of Windows 2000/XP for details.

- 3) Select [Custom] in the [Device Type] field and click on the [Settings] button.
- 4) Select [LPR] in the [Protocol] field and enter “lp” in lower case letters in the [Queue Name] entry box in the [LPR Settings] field. Then select the [LPR Byte Counting Enabled] check box.

IMPORTANT!

Do not fail to select the [LPR Byte Counting Enabled] check box, or images may not be reproduced correctly.

- 5) Click on the [OK] button, and then click on the [Next] button in the [Add Standard TCP/IP Printer Port Wizard] screen.
- 6) Click on the [Finish] button to confirm the new Standard TCP/IP port.

NOTE

To add Network Port, you can use also UNIX supported LPR other than the method above. (Use [Control Panel] to select [Add or Remove Programs] and then select [Add or Remove a Windows Component]. Browse through the list for [Other Network File and Print Services], select it then click the “Details” button. Check [Print Services for Unix] and then click the [OK] button. Following the procedure below can add an LPR port.)

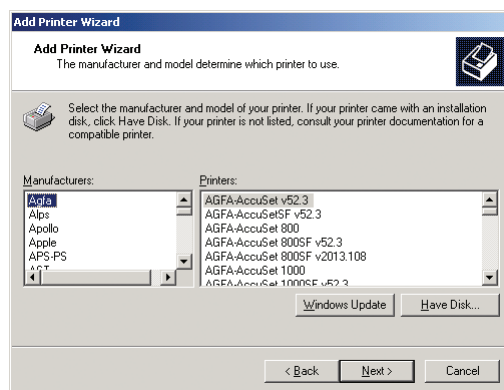
Add a LPR port.

- ① Click on the [Add Port] button.
- ② Select [LPR Port] in the available printer list and click on the [New Port] button.
- ③ Enter the IP address of your RISO printer.
- ④ Enter “lp” in lowercase letters in [Queue Name] entry box.
- ⑤ Click on the [OK] button, and then confirm that the LPR port is selected as above in the [Add Printer wizard] screen and click on the [Next] button.

5

Open the path for the additional printer driver.

Click on the [Have Disk] button in the screen shown below. Then the [Install From Disk] dialog box will appear.



6

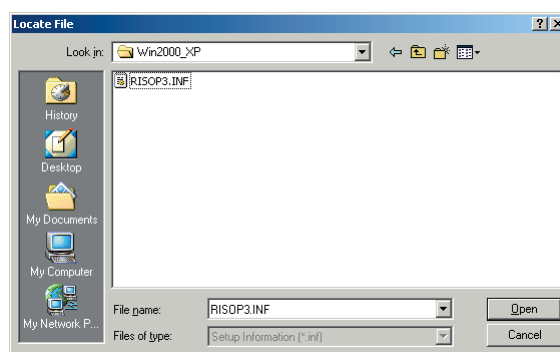
Insert the software CD-ROM.

Insert the dedicated software CD-ROM in the CD-ROM drive and click on the [Browse] button in the screen shown below.



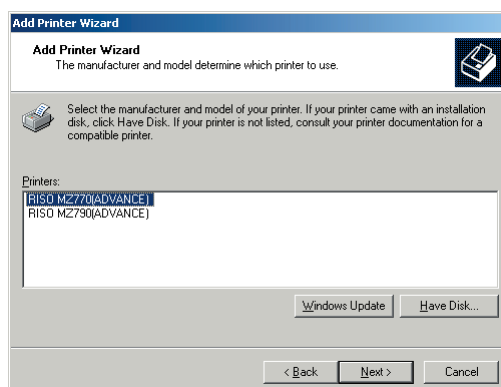
7 Select the file with .inf extension from the printer driver software files to be installed.

In the [Look in:] list box in the dialog box, select the disk drive where the CD-ROM is inserted. The names of the folders which contain different language printer drivers will then appear in the box. Select the [UK_English/US_English] - [Win2000_XP] folder containing the printer driver of a desired language, and click on the [Open] button twice. The [Install From Disk] dialog box then reappears with the name of the selected directory displayed. Confirm that the selected folder is correct in this dialog box and click on the [OK] button.



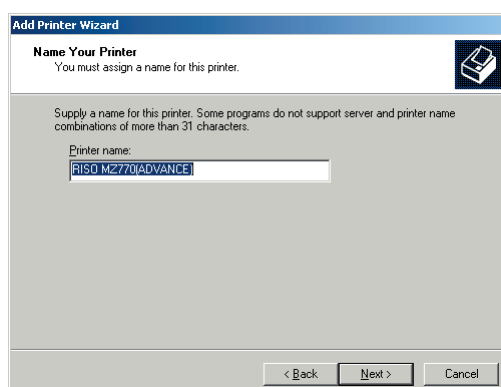
8 Select a printer driver which corresponds to your RISO printer.

Highlight a desired printer driver in the [Printers] box and click on the [Next] button.



9 Check the name of the added printer and specify it as [Default Printer].

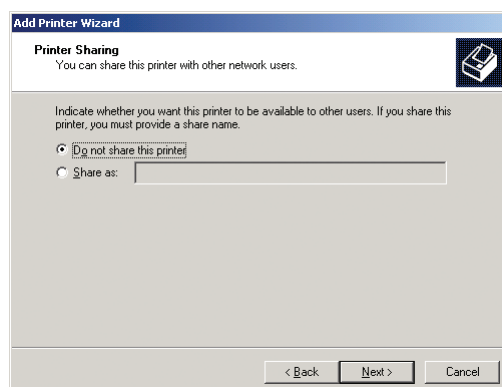
Confirm that the printer name you selected in the previous step appears in the [Printer name] box as shown below, and select [Yes] in the section below to set it as the default printer. Then click on the [Next] button.



10

Specify whether your RISO printer is shared or not.

Select “Do not share this printer” and click on the [Next] button.

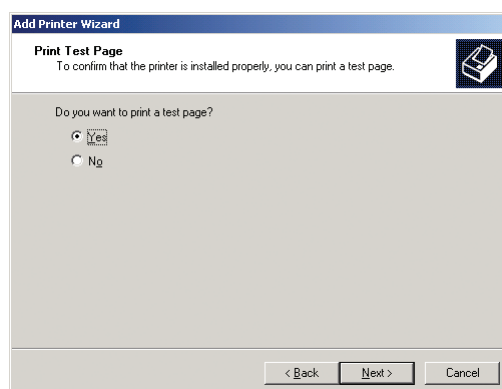
**11**

Select the [Test Page] option and install the printer driver's file from the CD-ROM.

Select [Yes] for the question, “Do you want to print a test page?”, and click on the [Next] button. Then, the printer driver's file is copied from the CD-ROM and a test page is printed out. To print out the test page, turn on your RISO printer, and load paper (above A4/LETTER SIZE) before clicking on the [Finish] button.

If the printer driver is installed properly, the selected RISO printer icon appears in the [Printers] folder.

NOTE The message box [Digital Signature Not Found] will appear. Read the message completely and click on the [Yes] button.

**12**

End the printer driver's installation.

After the test page is printed out, the checking window appears. Click on the [Yes] button in this window if the test page is properly printed, to finish the printer driver's installation. Then remove the CD-ROM out of the CD-ROM drive.

IMPORTANT!

Keep the CD-ROM in a safe location.

Printer Driver for Mac OS X

Connecting with Macintosh

Your Macintosh requires the “RISO PRINTER Network Interface Card RISORINC-NET” kit for printing with your RISO printer.

Your Macintosh is required to have an Ethernet board.

Connect your Macintosh with your RISO printer in which RISORINC-NET is embedded.

Use a commercial Ethernet cable (for 10BASE-T or 100BASE-TX) according to your operation environment.

IMPORTANT!

- Use an Ethernet cable specified with category 5 or more.

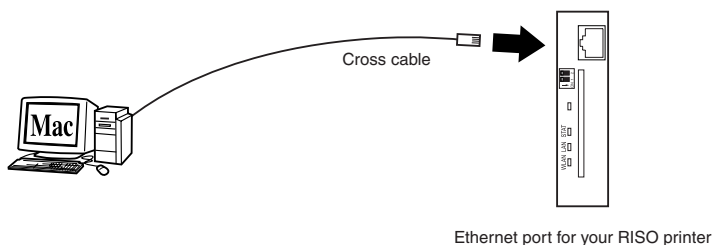
NOTE If you want to change the AppleTalk configuration, you must specify settings on your Macintosh machine as well as a selected printer.

For the machine setting, select [System Preferences] from the [Apple] menu. The [System Preferences] window will appear, and click on [Network].

Printer settings can be completed by ROSORINC-NET software (RISO-ADMIN).

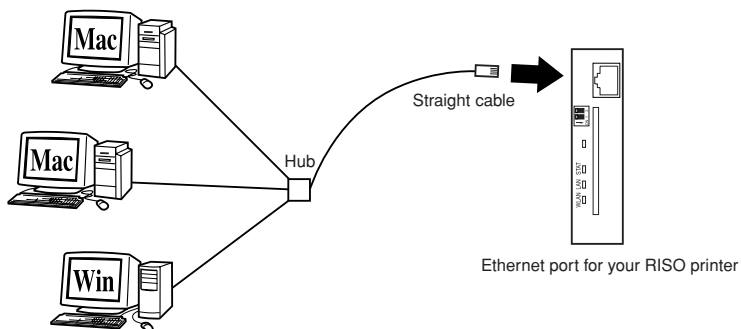
Refer to the RISORINC-NET User's Guide for settings.

■ When your RISO printer is connected with one Macintosh



- When software supplied with “RISORINC-NET” is used, settings for TCP/IP will be required.

■ When your RISO printer is connected on network



- When your RISO printer connected with a Windows PC, settings for TCP/IP will be required.

Installing the Printer Driver <Mac OS X>

You are required to install, in your Macintosh, the corresponding RISO printer driver that enables the printout of data on your RISO printer, and the dedicated Paper Editor.

IMPORTANT!

- This printer driver is exclusively for Mac OS X (10.3).
- RISO printer system requirements:
CPU : PowerPC G3 or higher recommended
192MB of RAM or more

- 1** Turn on your Macintosh and start Mac OS X.
- 2** Insert the dedicated software CD-ROM in the CD-ROM drive.
- 3** Double-click on the CD-ROM icon, and open the folder of a desired printer.
- 4** Double-click on the installer package (pkg file) icon for a desired printer.
Install the printer driver following the instructions appearing on the screen.
- 5** End the printer driver's installation.
NOTE ▶ Keep the CD-ROM in a safe location.
- 6** Restart your Macintosh.

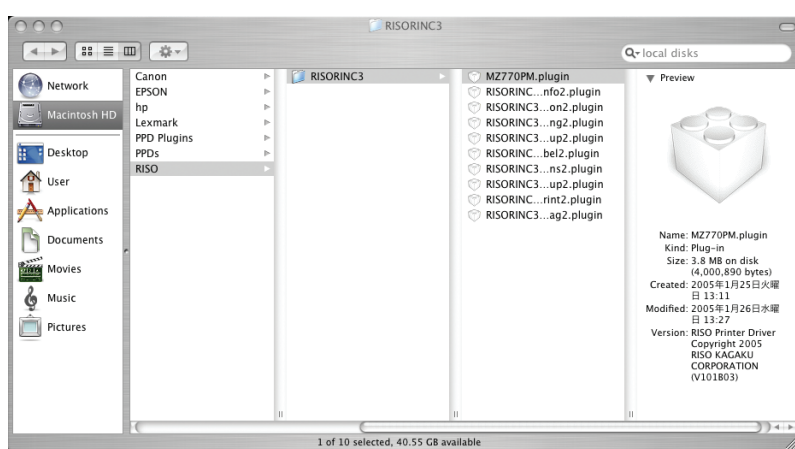
Add the printer to the printer list

- 1** Turn on your RISO printer.
- 2** On the Mac OS X startup disk, activate the [Printer Setup Utility] from the [Utilities] folder in [Applications] folder.
- 3** Click on the [Add] icon.
- 4** Select [AppleTalk] or [Rendezvous].
- 5** Click on the printer icon you want to add
- 6** Click on the [Add] button.
- 7** Confirm that your RISO printer is added to the printer list.

Finding Version Number of the Printer Driver

In case you contact your service representative due to function errors, check this version number beforehand.

- 1** On the Mac OS X startup disk, open the [RISORINC3] from [Printers]-[RISO] folder in [Library] folder.
- 2** Select the Plug-in file with name of your printer.



You can check the file information of the printer driver in preview window. When preview window is not displayed, select [Get Info] in [File] to display preview window. The bottom column in Version displays driver's version number.

Working with the Printer Driver

■ Printer Driver for Windows	24
Sending and Printing Data	24
Setting the Print Conditions	27
[Guide] Tab	27
[Coloring] Tab	32
[Image] Tab	35
[Extensions] Tab	37
Changing the Printer Driver Configuration ...	39
Creating a RISORINC-format file	44
■ Printer Driver for Mac OS X	45
Sending and Printing Data	45
Register frequently used custom paper size	47
Dialog Box Settings	49
Mac OS settings	49
Copies & Pages	49
Layout	50
Output Options	51
Scheduler	51
Paper Handling	52
Color Sync	52
RISO Printer Driver Settings	53
Printer Setup	53
Storage Tag	55
Coloring	56
Printer Options	60
Photo processing	62
Program Printing	63
Summary	63
Changing the Printer Driver Configuration ..	64
Configuration	64
Print Color Entry	65
Color information reference	65

Printer Driver for Windows

Sending and Printing Data

Follow the procedures given below to print out document data directly on your RISO printer.

If the corresponding RISO printer driver has not been installed in your computer yet, install it first, referring to the section “Installing the Printer Driver” on [page 8](#) or [13](#).

IMPORTANT!

- The maximum print area is different depending on the model of RISO printer. If you want to know the maximum print area of your document, consult the user’s guide of your RISO printer.
- For other limitations, also read the user’s guide of your RISO.

1

Turn on your RISO printer and load paper.

Load paper whose size is the same as defined in the document file to be printed.

2

Turn on your computer and start Windows.

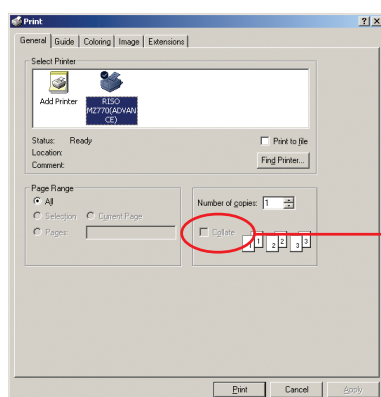
3

Specify the print job in the [Print] dialog box.

Open the document file to be printed, select [Print] in the [File] menu to open the [Print] dialog box.

NOTE Never fail to deselect the [Collate] box. If it is selected, the master-making operation will be repeated for every copy.

The displayed items in the [Print] dialog box vary depending on the application software.



Remove the check mark for [Collate].

IMPORTANT!

If you want to print a file consisting of several pages, and the file include different paper sizes or page directions, printing may fail when you choose [All] for the paper range. Specify page numbers to print for those of same page size or direction.

Printer

Make sure that [Printer] is set to [RISO...]. If not, click on the [▼] bar in the [Name] box and select it from the installed printer's list.

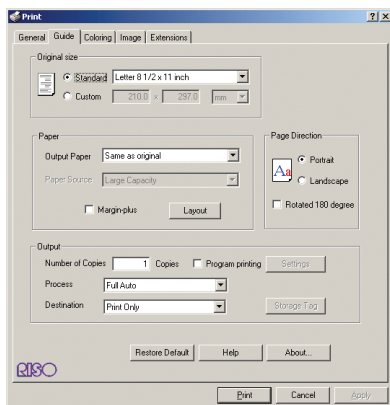
Copies

Specify the number of copies to be printed within the following range : 1 to 9,999.

If you want to set additional print conditions for the current print job ;

Open the [Properties] dialog box by clicking on the [Properties] button in the [Print] dialog box.

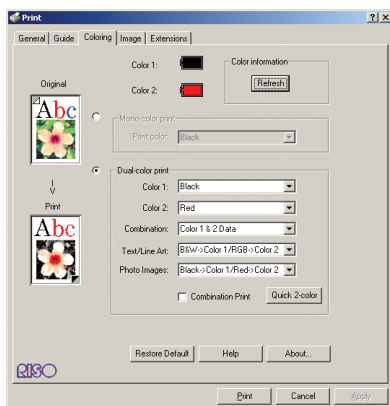
[Guide] Tab (refer to [page 27](#) for detailed settings)



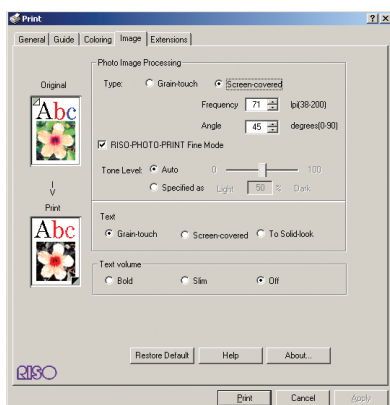
IMPORTANT!

Settings of paper size and page direction for this tab should be identical with those in the application software to be used.

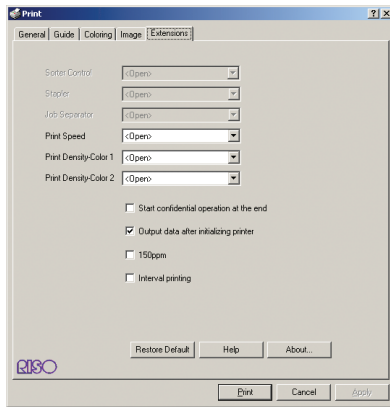
[Coloring] Tab (refer to [page 32](#) for detailed settings)



[Image] Tab (refer to [page 35](#) for detailed settings)



[Extensions] Tab (refer to [page 37](#) for detailed settings)



If no settings are required, leave this tab as “<Open>” or make no changes.

(Printing will be done according to the setting of your RISO printer.)

If you want to customize settings, be sure to refer to the user’s guide of your RISO printer for the relevant section.

4

Start printing.

Click on the [OK] button in the [Print] dialog box.

The selected document file data is then transmitted to your RISO printer and printed out there as specified in the previous step.

Setting the Print Conditions

You can set various print conditions over the tabs in the [Properties] dialog box.

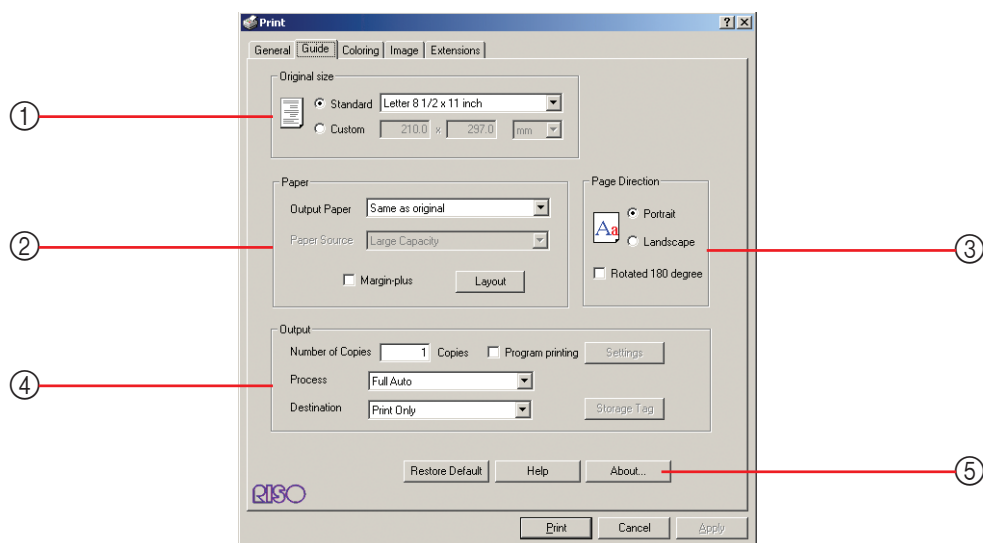
To open this dialog box, click on the [Properties] button in the [Print] dialog box.

The operation here is common to Windows 98SE and Windows 2000/XP.

Some screen indications and tab names might be different.

NOTE Refer to the document of Windows and other associated applications for how to use the other tabs of this dialog box.

[Guide] Tab



Settings

① Original size

- Standard
- Custom

② Paper

- Output Paper*
- Paper Source
- Margin-plus*
- Layout*

③ Page Direction

- Rotated 180 degree

④ Output

- Number of Copies
- Program printing*
- Process
- Destination
- Storage Tag

⑤ About...

* This functions are applicable only under Windows 2000/XP, and it is not displayed under Windows 98SE.

① Original size

You can specify a desired paper size in either “Standard” or “Custom” box as a frequently-used one. The factory-set paper size is “Standard: Letter 8 1/2 × 11 inch” or “A4 210 × 297mm”.

– Changing the standard paper size setting

When using any other standard size of paper than the displayed one, click on the [▼] bar to display a list of paper sizes and select a desired one by highlighting it.

IMPORTANT!

When paper is fed with the wide edge first, select the paper size whose name contains the word “-R”. Be sure to specify the same paper size which was set in the application software used when creating the document data.

– Changing the custom paper size setting

When using any other custom-size paper than the displayed one, enter its width and length in the boxes. If desired to change the unit of length from “inch” to “mm”, click on the [▼] bar next the same box and highlight [mm].

NOTE • The range of paper size you can specify here depends on the specifications of your RISO printer.

- You can name custom-size paper and register it in the list of standard paper sizes. See “Registering Custom Paper Size as Standard” on [page 40](#) for the registration procedure.
- In some application software, inputs in [Custom] column might be ignored. In such a case, register the non-standard size paper. (See [page 40](#))

② Paper

Output Paper

Select the paper size for printing.

If you do not use scaling, select [Same as original].

If you select paper size different from the original text, scaling will be done from 50% to 200%.

Paper Source

This option is not available on the printer which you are using.

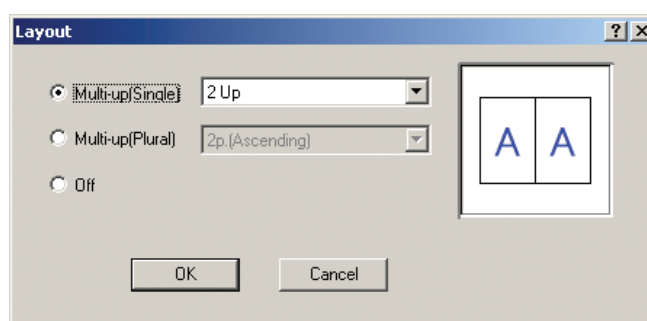
Margin-plus

If you select this check box, printing will be done in a 95% scaling.

Layout

You can print the data of two or more pages on one sheet of paper.

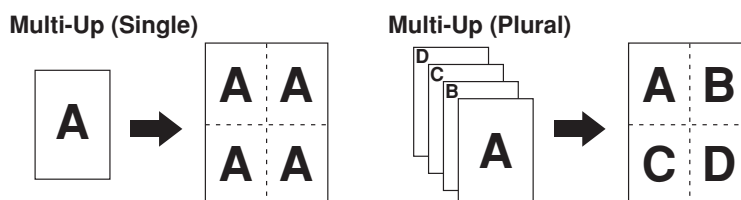
Click on the [Layout] button to open the [Layout] dialog box.



Multi-up (Single) : Print two or four copies of a single text on one sheet of paper. Available in 2 Up or 4 Up.

Multi-up (Plural) : Print two or four logical pages on a single physical page. Available in 2p.(Ascending), 2p.(Descending), 4p.(Horizontal-Ascending), 4p.(Vertical-Ascending), 4p.(Horizontal-Descending), or 4 p.(Vertical-Descending).

Off : No Multi-up (single) or (plural) printing is conducted.



③ Page Direction

You are required to select the same page direction as of original document data here. The factory-set page direction is “Portrait”.

When paper is fed with the wide edge first, however, the page direction specified here should be opposite to that of original document data, i.e. “Portrait” to “Landscape” and “Landscape” to “Portrait”.

NOTE When paper is fed with the wide edge first, the paper size whose name contains the word “-R” is selected in the [Paper] field to the left.

Rotated 180 degree

You can rotate print images by 180 degrees by activating this option. Select the check box to activate it.

IMPORTANT!

This option is also available on the control panel of your RISO printer. Make sure it is not activated on both sides at the same time. If it is, this option will be canceled.

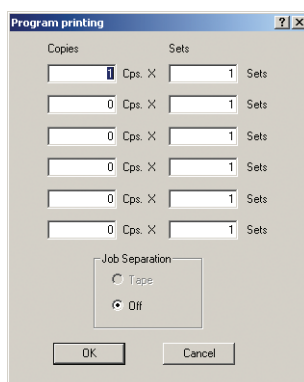
④ Output

Number of Copies

You can use this field to specify the number of copies if no field is prepared for print quantity entry in your application software. When the number of copies can be specified in the [Print] dialog box of the application software, on the other hand, you can ignore this setting because it has no effect on printing operation.

Program printing

Printing jobs are conducted in sets of copies. One set should contain at least one page. By selecting program printing, you can click on [Settings]. Click [Setting] to open [Program printing] dialog box.



Copies : Enter the value for number of pages per set to be printed.

Sets : Enter the value for number of sets to be printed.

Job Separation

Tape : Job separation by separation tape insertion.

Off : No job separation conducted

■ **For job separation, optional job separator should be mounted on your RISO printer.**

Process

You can specify how to process your print jobs on your RISO printer, i.e. to complete them without interruption or to interrupt them after a specified process step. By interrupting your print jobs, you can check print position and quality with test prints before printing process or change the print job flow according to your print requirements. Click on the [▼] bar and select a desired process flow from the displayed list. The available process flows are as follows :

Full Auto:

To complete print jobs without operator involvement on your RISO printer. No pause is made between master-making and printing processes until the end of print jobs.

Semi-Auto (Print):

To interrupt print jobs before each master-making process, thus allowing you to handle a stack of printed copies, especially for duplex printing. You can view the page image on the LCD of the printer to check what you are about to print.

Semi-Auto (Master):

To interrupt print jobs before each printing process, thus allowing you to check a sample print.

Manual:

To interrupt print jobs before each process step, i.e. both master-making and printing processes.

IMPORTANT!

[Process] is available only when you select [Print Only]. (See [page 30](#)) (The setting is not valid for [Storage Only].) For stored data, set the [Process] mode from the printer display when the data is activated.

Destination

■ **The [Destination] is displayed only when your RISO printer is equipped with the storage memory (DM-128CF).**

NOTE When you install the printer driver, open the [Properties] dialog box, and you can select the storage memory to be installed or not installed from the [Configuration] tab. (See [page 40](#))

Click on the [▼] bar to view the pull-down menu and select the destination.

Print Only

Send the data to your RISO printer, and start printing in the auto process. Stored data will be automatically erased after the print job is done.

Print & Storage

The print job is processed and the data is stored in the printer. You can reactivate the stored data on your RISO printer at anytime you like.

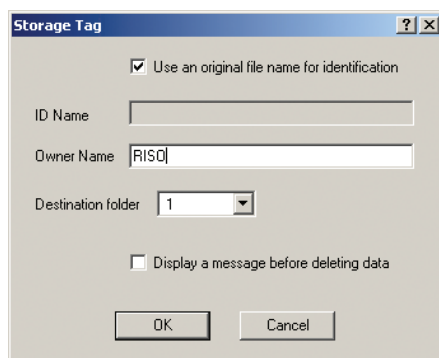
Storage Only

Send the data to your RISO printer to be stored. You can reactivate the stored data on your RISO printer at anytime you like.

Storage Tag

Set additional information necessary for storing data. The information below will be stored together with the document data. Such information can be used to identify stored data.

Selecting [Print & Storage] or [Storage Only] for [Destination] enables you to click on the [Storage Tag]. Click on the [Storage Tag] to open the [Storage Tag] dialog box.



Use an original file name for identification:

Select the check box to automatically use an original file name for identification on the application software on which the document was created.

ID Name:

Enter ID name if you want to have any name different from one specified on the application software on which the document was created.

Owner Name:

You can enter the name of an administrator of stored data.

The default value is the computer user.

Destination folder:

Specify the folder in which the storage memory is saved.

Display a message before deleting data:

Select the check box to display a confirmation message on the control panel of your RISO printer before deleting stored data.

IMPORTANT!

You are not allowed to use the prohibited characters as follows for [ID Name] and [Owner Name].

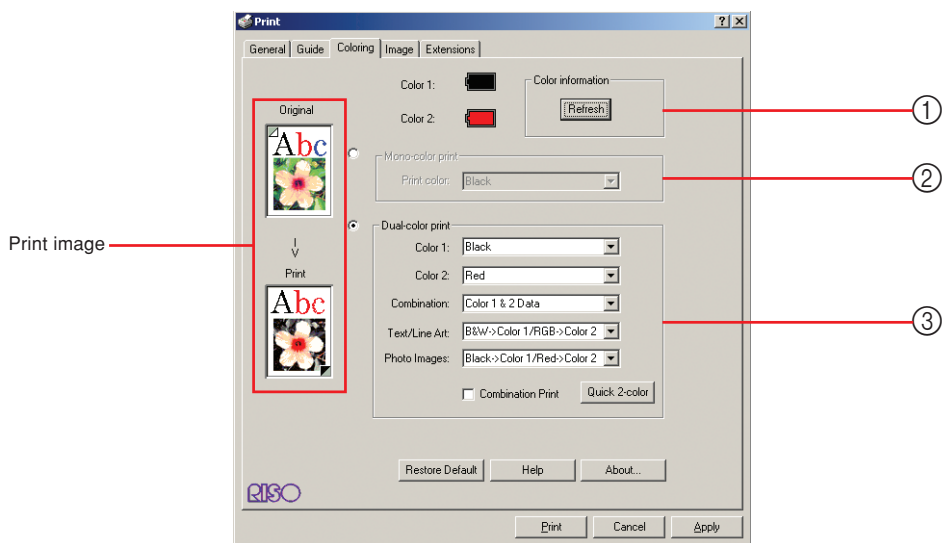
Prohibited characters : \ / : , ; * ? " ' < > |

⑤ [About...] button

Opens the [About...] dialog box, in which the version number of the printer driver can be checked. In case you contact your service representative due to function errors, check this version number beforehand.



[Coloring (Colouring)]



Settings

① Color information*

② Mono-color print

Print color

③ Dual-color print

Color 1

Color 2

Combination

Text/Line Art

Photo Images

Quick 2-color*

Combination Print*

* This functions are applicable only under Windows 2000/XP, and it is not displayed under Windows 98SE.

① Color information

- To refresh Color information, use Configuration to select [Color information] and then select [Reference] to set the details. (See [page 39](#))

By clicking on the [Refresh] button the color information set in your RISO printer will be reflected in the RISO Printer Driver. When such color information is completely acquired, the letters in the Ink Color of the printer driver will be indicated in blue.

IMPORTANT!

When RISORINC-NET monitoring tool is not activated, [Refresh] cannot be performed.

② Mono-color print

When Mono-color print is selected, printing is done by only one cylinder (print drum).

Print color

When information is completely acquired by clicking on [Color information], the color name of Color 1 mounted on your RISO printer will be displayed on "Print color" in blue letters.

If the letters are not changed to blue, manually select the print color. (In addition, check if the selected color is actually mounted on your RISO printer.)

NOTE When mono-color print is selected, it is recommended to use the Color 1. However, if the selected color is set to Color 2 side, use the Color 2 for printing.

③ Dual-color print

When dual-color print is selected, each of text/line art section and photo images in the document data will be printed out respectively with dual coloring.

IMPORTANT!

- **As for characters, numeral figures, and drawings, create the data using colors on fonts and lines.**
You do not have to select same colors as those mounted on your printer, but the data will be printed in two colors even if you use more than two colors on your document.
- **As for photo images, only color photos can be printed in two colors. If you want to print black-and-white photos, specify either the color 1 or 2.**

Color 1

Color 2

When information is completely acquired by clicking on [Color information], each name of two colors mounted on your RISO printer will be displayed on "Print color" in blue letters.

If the letters are not changed to blue, manually select the print colors. (In addition, check if the selected colors are actually mounted on your RISO printer.)

Combination

In using dual-color print, set the two cylinders (Color 1 & Color 2) either to start with Scanning (making a master) or Print Only (using the present master).

Color 1 & 2 Data : Master making and dual-color print are carried out with both cylinders (print drums).

Color 1 Data Only : Master making is carried out only in color 1 and the documentation data is printed out with both cylinders (print drums).

Color 2 Data Only : Master making is carried out only in color 2 and the documentation data is printed out with both cylinders (print drums).

Text/Line Art

- All->Color 1** : Text and line art are printed out in color 1.
- All->Color 2** : Text and line art are printed out in color 2.
- RGB->Color 1/B&W->Color 2** : The colored sections of the text/line art are printed out in color 1 and the black (gray) sections are printed out in color 2.
- Red->Color 1/Others->Color 2** : Red, yellow and magenta sections of the text/line art are printed out in color 1 and blue, green and black sections are printed out in color 2.
- B&W->Color 1/RGB->Color 2** : The colored sections of the text/line art are printed out in color 2 and the black (gray) sections are printed out in color 1.
- Others->Color 1/Red->Color 2** : Red, yellow and magenta sections of the text/line art are printed out in color 2 and blue, green and black sections are printed out in color 1.

Photo images

- All->Color 1** : Photo images are printed out in color 1.
- All->Color 2** : Photo images are printed out in color 2.
- | | |
|--|---|
| Red->Color 1/Black->Color 2 | } Coloring Process reproduces colored photos in two colors. Make your choices depending on print colors mounted on your RISO printer. Coloring Process is executed corresponding to the print colors mounted. You do not have to select the same colors as those mounted on your printer, but your choice will work for best results. |
| Red->Color 1/Blue->Color 2 | |
| Red->Color 1/Green->Color 2 | |
| Black->Color 1/Red->Color 2 | |
| Blue->Color 1/Red->Color 2 | |
| Green->Color 1/Red->Color 2 | |

Quick 2-color

Matching the set ink colors, set the coloring of [Text/Line Art] and [Photo images] to quick 2-color parameter.

When the settings can be completed, the parameter will be displayed in blue letters.

NOTE Select the check box of [Auto Quick Dual-color] in [Configuration]. Under this condition, if [Color information] is refreshed, [Quick 2-color] is carried out automatically. See [page 39](#)

Combination Print

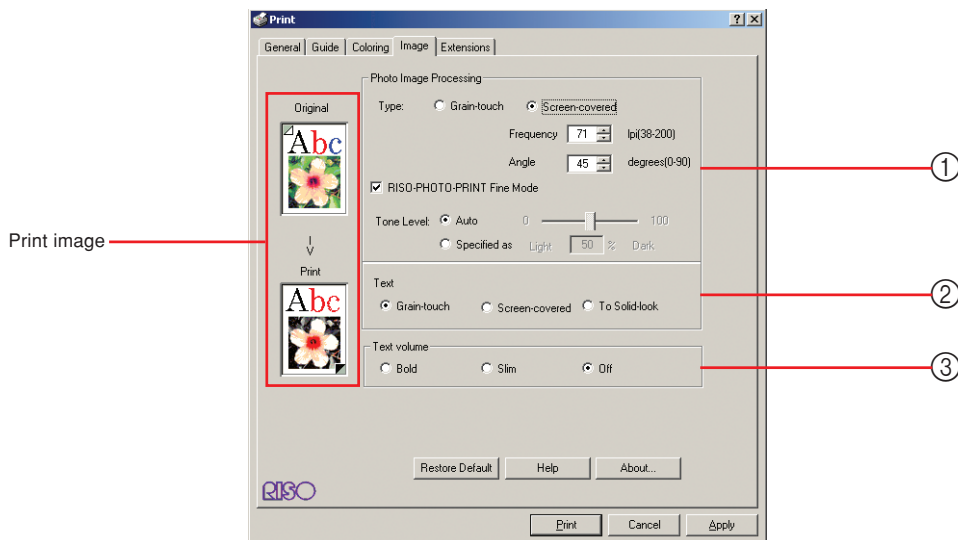
With combination print, the original data is automatically colored in two (on the assumption: color 1 of black and color 2 of red), the data is transmitted to your RISO printer and the master making is carried out. The printer will stop after master making is carried out. Use the combination print display in the printer control panel to set the number of the copies and to press the start key.

NOTE Following the settings of [Mono-color print], [Dual-color print], [Combination], [Text/Line Art] and [Photo images], the image data of each documentation data and print will be displayed.

The images are different from the actual documentation data and prints.

The settings of [Print color], [Color 1] or [Color 2] are not reflected to the print image.

[Image]



Settings

① Photo Image Processing

Type

Grain-touch

Screen-covered

Frequency

Angle

RISO-PHOTO-PRINT Fine Mode

Tone Level

② Text

Grain-touch

Screen-covered*

To Solid-look

③ Text volume

Bold

Slim*

Off

* This functions are applicable only under Windows 2000/XP, and it is not displayed under Windows 98SE.

① Photo Image Processing

Type

You can select either of the following two styles in printing out photo images in your document data. The print result of the selected style of photo images is previewed on the screen.

Grain-touch:

Various tones of photo images are reproduced by changing the number of dots in an area according to original density. The printed-out photo images will have grain-touch appearance.

Screen-covered:

Various tones of photo images are reproduced by changing the size of dots according to original density. The printed-out photo images will be covered with a dot screen.

Though the wide range of tone levels in original photo images can be kept in this style, their fineness will be lowered.

When you select [Screen-covered], you can set the screen-covered parameter.

Frequency

You can select the frequency of dots per inch (25.4 mm). You can select the value from 38 to 200. The default value is 71.

Angle

You can select the angle of dot direction so as to make adjustments against moire or other problems. You can select the value from 0 to 90. The default value is 45.

If you select dual-color print, enter the value of the angle for parts of the image printed by other colors than red (i.e. black, blue, green). The angle of dots for other parts of the image printed by red is automatically optimized.

RISO-PHOTO-PRINT Fine Mode

This image processing mode is originally developed by RISO, in order to reproduce photo images while keeping their original fineness as well as possible.

You can activate this mode by selecting the corresponding check box.

Tone Level

You can adjust the tone level of original photo images to obtain an optimum photo tone in prints.

Auto

The tone level of original photo images is automatically adjusted to compensate for their tone unbalance.

Specified as

The tone of original photo images can be changed according to your needs by shifting the pointer on the sliding bar or directly entering a desired value into the corresponding field. Shift the pointer toward “0%” if you want to make the photo tone lighter and toward “100%” if you want to make it darker. 100 steps of tone level are available. This option covers the whole job, not available in respective images.

② Text

Specifies the expression method of the text.

Grain-touch : This mode displays the color gradation. The bright color is printed out in light tone and the dark color is printed out in deep tone.

Screen-covered : The text sections are displayed with halftone dots. This mode is unsuitable for small sized text.

To Solid-look : This mode makes all text solid-look. You can use this mode to express the text clearly. The difference of each text color cannot be expressed.

③ Text volume

You can adjust the thickness of text in this mode.

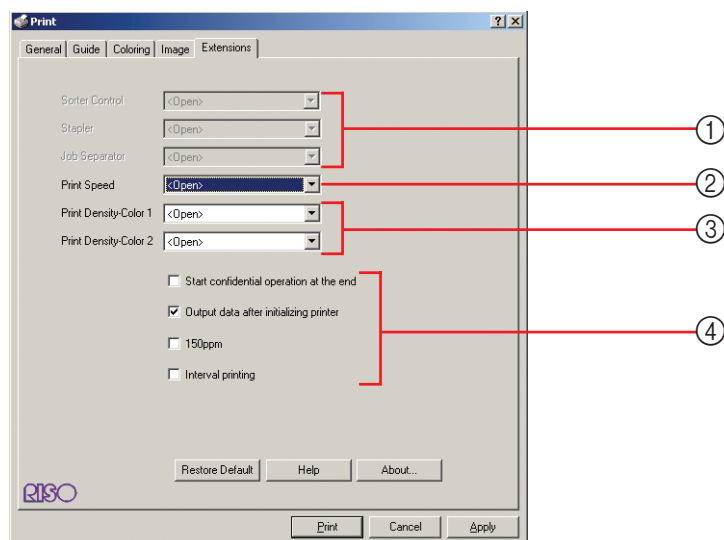
Bold : makes the text thicker and print out (to prevent patchy)

Slim : makes the text slimmer and print out (to prevent crushed lines)

Off : doesn't adjust the text volume.

NOTE According to the settings of each [Type], [RISO-PHOTO-PRINT Fine Mode], [Text] and [Text volume], the image of the documentation data and print will be displayed. The setting of [Tone Level] is not reflected. The actual documentation data and prints are different from the displayed images.

[Extensions] Tab



① Configuration

Sorter Control
Stapler
Job Separator

② Print Speed

③ Print Density

④ Extensions

Start confidential operation at the end
Output data after initializing printer
150ppm
Interval printing

① Configuration

- [Sorter Control] and [Stapler] options are not available on the printer which you are using.
- [Job Separator] is displayed when you select the check box of [Job Separator] in the optional device concerned (See [page 40](#)).

Job Separator

You can activate the job separator on your RISO printer and select the timing of separation tape insertion.

<Open> : Follow the present setting of your RISO printer.

OFF : No separation tape inserted.

ON-Between Documents : Insert separation tapes per job.

ON-Between Pages : Insert separation tapes per page.

NOTE For the features and operations of the Job Separator, refer to the User's Guide of the Job Separator.

② Print Speed

You can select the print speed of your RISO printer. Click on the [▼] bar and select a desired speed level from the displayed list. 5 levels of print speed are available. The factory-set speed level is "<Open>", which lets your RISO printer operate at the speed level as specified on its own control panel.

③ Print Density

You can select the print density on your RISO printer. Click on the [▼] bar and select a desired density level from the displayed list. 5 levels of print density are available for the respective colors. The factory-set density level is “<Open>”, which lets your RISO printer print at the density level as specified on its own control panel. For [Dual-color Print], select the print density on your RISO printer for cylinders 1 and 2, respectively. See [page 33](#)

④ Extensions

Start confidential operation at the end

You can prevent your confidential documents from being duplicated without your knowledge by selecting this check box. When this check box is selected, the remaining master is automatically replaced with a blank one after all specified print jobs are finished.

Output data after initializing printer

Your RISO printer is initialized before receiving print data when this check box is selected. It is recommended to select this check box in most cases.

150ppm

Allows high-speed printing.

Interval printing

By allowing the print cylinder (drum) to skip a rotation during printing and extend the printed paper ejection interval, the ink has time to dry, preventing it from leaving marks on the back of the next sheet.

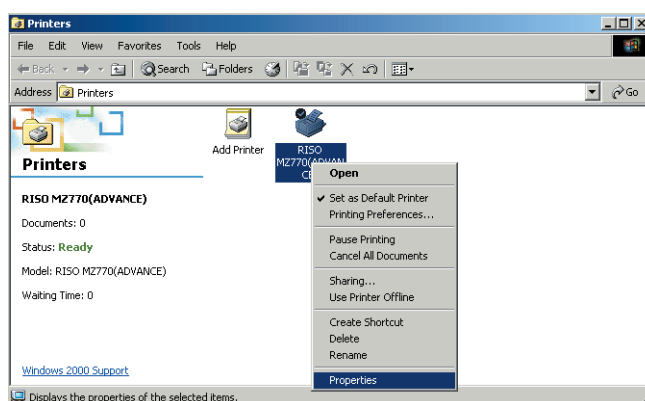
Changing the Printer Driver Configuration

For customized use, register optional devices, frequently-used custom paper size, print color, Auto Quick Dual-color and color information. If you do not change the printer driver configuration, you will not be able to select the corresponding option when specifying the print conditions of your print job.

1

Open the [Configuration] tab of the [Properties] dialog box.

Click the right-hand mouse key on the corresponding RISO printer icon in the [Printers] folder and select [Properties] in the displayed menu. Then click on [Configuration] in the [Properties] dialog box.

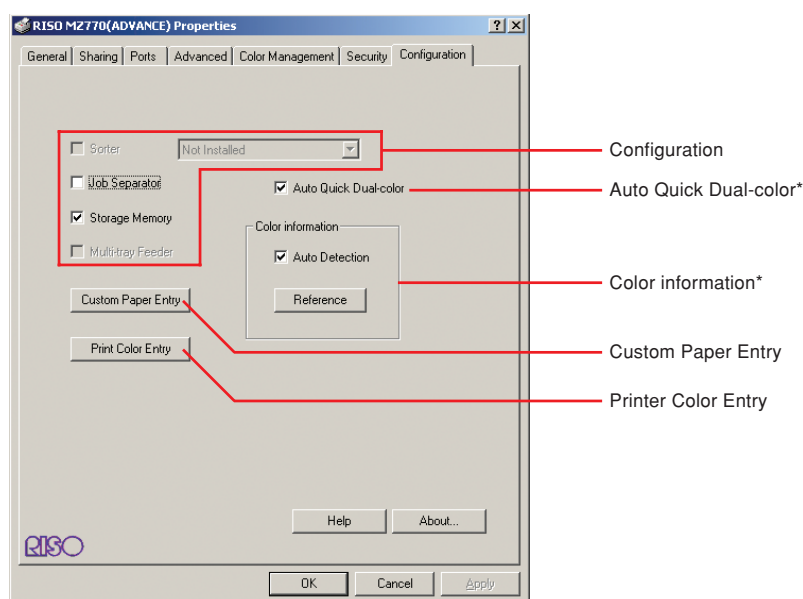


2

Select the optional devices with which your RISO printer is equipped.

Mark the check boxes of the optional device concerned.

You cannot select this option without any optional devices connected.



* This functions are applicable only under Windows 2000/XP, and it is not displayed under Windows 98SE.

Sorter

This option is not available on the printer which you are using.

Job Separator

Select [On] if your RISO printer is equipped with the Job Separator.

Storage Memory

Select [On] if your RISO printer is equipped with DM-128CF.

Multi-tray Feeder

This option is not available on the printer which you are using.

3

Register paper and colors when you needed.

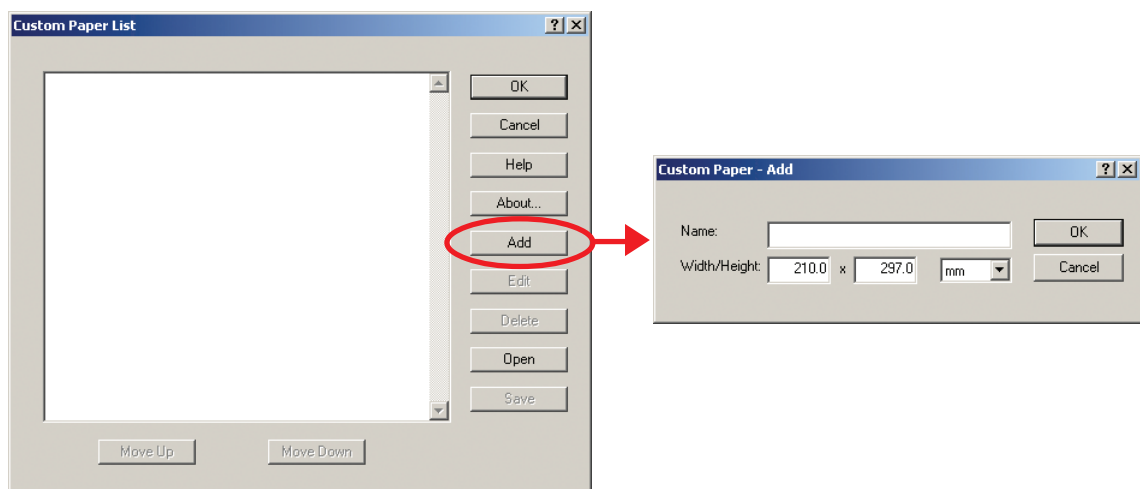
Registering Custom Paper Size as Standard

You can register custom paper sizes as standard in the [Custom Paper List] dialog box, which can be opened by clicking on the [Custom Paper Entry] button in the [Configuration] tab of the [Properties] dialog box. The custom paper sizes can be named and entered in the standard paper size list.

NOTE To open the [Properties] dialog box, open the [Printers] folder in the [Settings] from the [Start] menu, click the right-side mouse key on the corresponding RISO printer icon and select [Properties] from the displayed menu.

- 1) Click on the [Custom Paper Entry] button to display the [Custom Paper List] dialog box.
- 2) Click on the [Add] button.

The [Customer Paper - Add] dialog box appears.

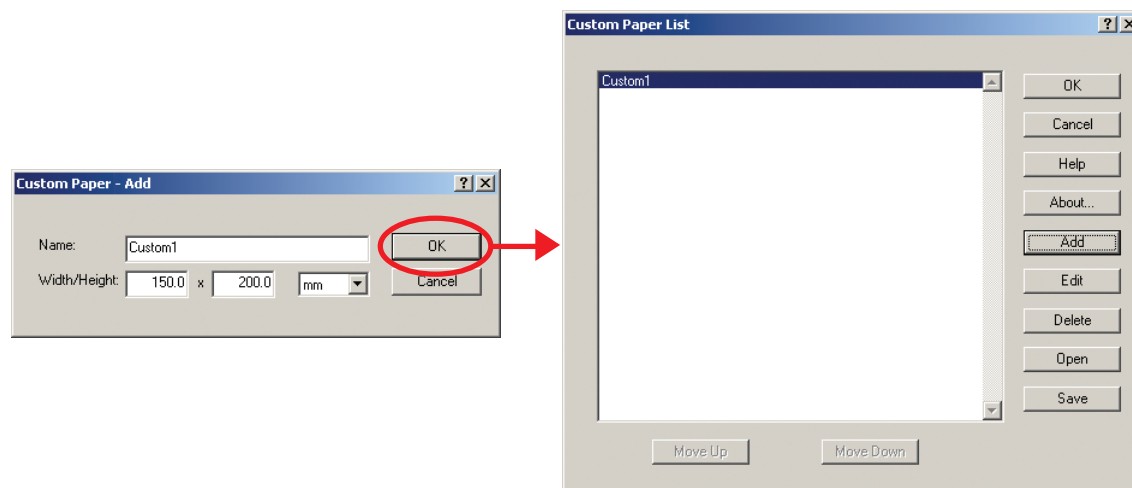


3) Enter a custom paper size and name it.

The length of the name can be up to 30 characters.

If you wish to change the unit of length from “inch” to “mm”, click on the [▼] bar next to the same box and highlight “mm”.

NOTE The available minimum paper size is 0.394 inch x 0.394 inch (10.0 mm x 10.0 mm). The maximum paper size varies with the printer you use. For details, see the user’s guide of your printer.



4) Click on the [OK] button.

The [Customer Paper - Add] dialog box is closed and the paper size name which has just been registered is added to the [Custom Paper List] dialog box.

You can save the information of your customer paper size as a Custom Paper Entry information file (.udp extension) by clicking on the [Save] button. If you want to register the custom paper size from the Custom Paper Entry information file, click on the [Open] button to select the file.

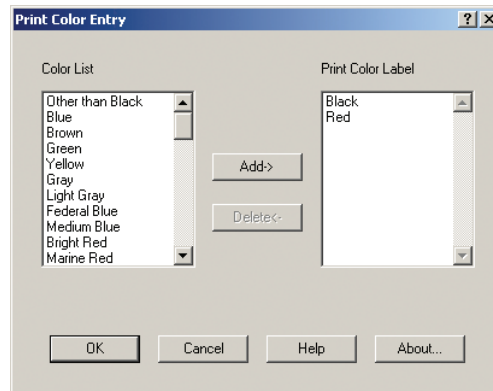
- NOTE**
- If you register the paper size in horizontal direction, enter the value of longer side in the [Width] field and that of shorter side in the [Height] field.
 - Entry of the name and dimensions will help you when you select the paper size.
 - When changing the name and/or dimensions of a custom paper size, select the corresponding name from the list and click on the [Edit] button. When deleting a custom paper size, select the corresponding name from the list and click on the [Delete] button.

Register the Print Colors

Register the all print colors which your RISO printer can provide.

The print colors registered are displayed in the Print Color [Color 1] [Color 2] pull-down menu in the [Coloring] tab (See [page 32](#)).

- 1 Click on the [Print Color Entry] to open the [Print Color Entry] dialog box.
- 2 Select the colors you have on your RISO printer from the [Color List] in the [Print Color Entry] dialog box, and click on the [Add] button.



- 3 Click on the [OK] button.

Auto Quick Dual-color

If you select this check box, the “Dual-color print” will be set as default on [Quick 2-color] (See [page 34](#)) when you update the color information.

Color Information

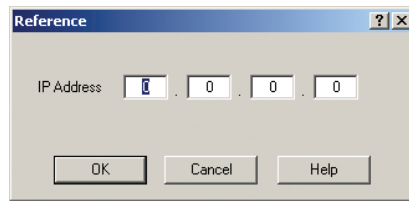
Make your choice for auto detection of color information.

Check box selected : Detection of the color information of the print color mounted on the printer is made every time you open the printer’s properties to reflect the information on the [Color Label] for the printer driver.

For printing process without opening the printer’s properties, detection of color information is made prior to printing process, and the data is output with the print color mounted on the printer by temporarily reflecting the printer drive settings. In this case, if [Auto Quick Dual-color] is checked, the coloring parameter suitable for the print color mounted on the printer is automatically selected.

Check box not selected: Color information is updated only when you click on [Refresh] button of the [Coloring] tab.

Reference



You need to make an entry for this field when detection is made for the color (colour) information of the cylinder (drum) mounted on the printer.

IP Address

Enter the IP address of your RISO printer which is connected.

4

Click on the [OK] button.

The new printer driver configuration is confirmed and the [Properties] dialog box is closed.

Creating a RISORINC-format file

It is necessary to create a RISORINC-format file before sending data via FTP with RISORINC-NET.

NOTE A RISORINC-format file can only be used with RISO printers.

All settings made in the printer driver are saved with the file.

1

Open a document file and specify the print job in the [Print] dialog box.

Select [Print] in the [File] menu to open the [Print] dialog box.

2

Confirm that [RISO...] is selected in the [Printer] field in the [Print] dialog box.

The selected [RISO...] should correspond to the RISO printer model to which your document file is to be transmitted. Otherwise, the transmitted document data may not be printed out correctly on the target RISO printer.

IMPORTANT!

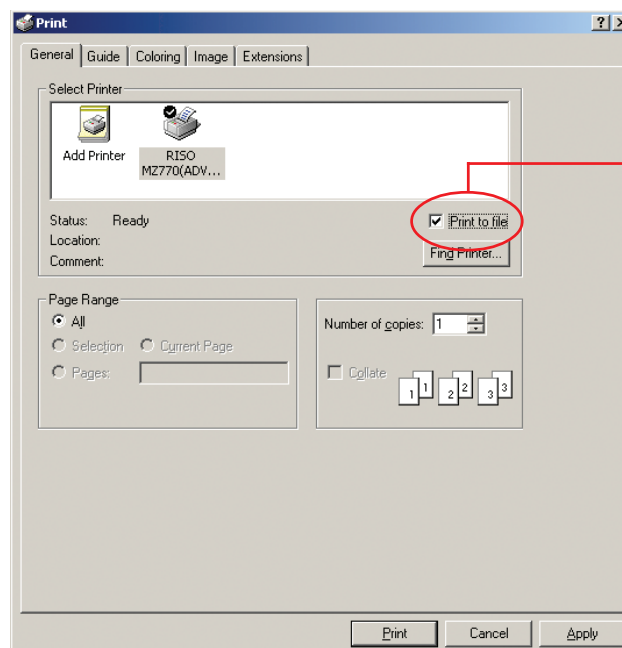
The RISORINC-type file should be created with the RISO Printer Driver corresponding to your RISO printer. If the printer driver does not correspond to your RISO printer driver, the transmitted document may not be printed out correctly.

3

Output the document data to a file.

Select the corresponding check box, ex. [Print to file], and click on the [Apply] button. Then specify the name and the destination for the RISORINC-format file to be created in the displayed dialog box and click on the [OK] or [Save] button.

NOTE • If the corresponding check box does not exist in the [Print] dialog box, change the printer driver configuration. Open the [Properties] dialog box from the [Printers] folder and select "File" in the [Print to the following port] list in the [Details] or [Ports] tab. Then open the [Print] dialog box and click on the [OK] button.



Mark the check box of the [Print to file]

Printer Driver for Mac OS X

Sending and Printing Data

Follow the procedures given below to print out document data directly on your RISO printer.

If the corresponding RISO printer driver has not been installed in your Macintosh yet, install it first, referring to the section “Installing the Printer Driver” on [page 19](#).

IMPORTANT!

- The maximum print area is different depending on the model of RISO printer. If you want to know the maximum print area of your document, consult the user's guide of your RISO printer.
- For other limitations, also read the user's guide of your printer.

1

Turn on your RISO printer and load paper.

Be sure to turn your RISO printer on, and feed the paper in same size as the document printed.
Adjust the feeder and output tray prior to printing.
Refer to the user's guide of your RISO printer for details.

2

Turn on your Macintosh and start Mac OS X.

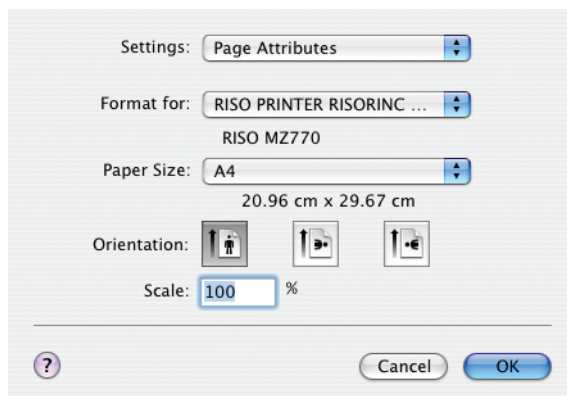
3

Open the [Page Setup] dialog box.

Open the document to be printed, and select [Page Setup] from the [File] menu. (Menu names may vary depending on the software application.)

Important!

If you have two or more printers connected, select the current printer from the [Format for].
After settings are confirmed, click on the [OK] button to close the dialog box.

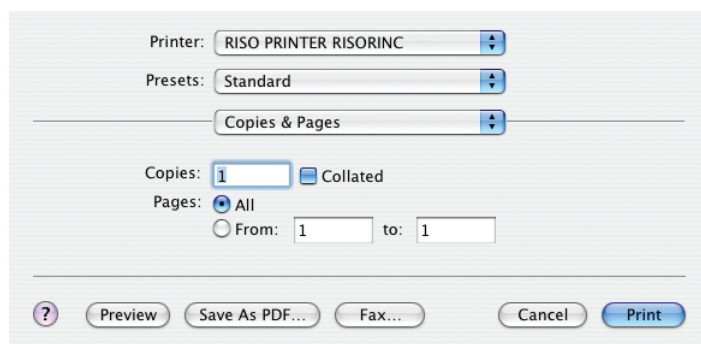


Define the setting and click on the [OK] button.

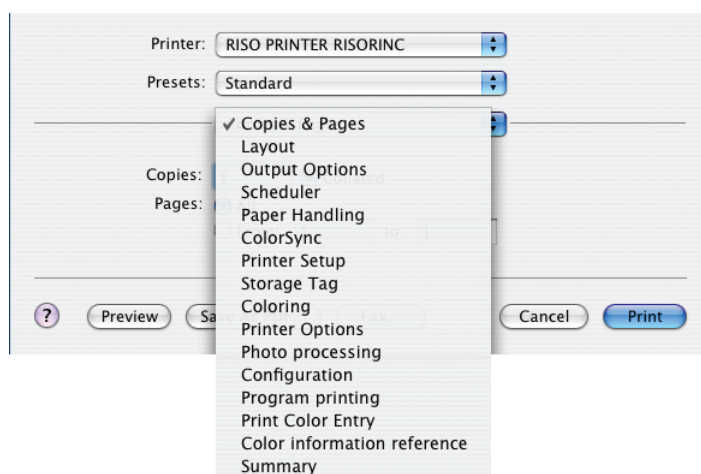
4

Specify the print job in the [Printer Setup] dialog box.

Click on [Print] in the [File] menu to open the [Printer Setup] dialog box.



Specify the number of copies and range of pages to be printed. For detailed settings, select relevant items from the list box for settings. (See p.49)



5

Start printing.

Click on the [Print] button.

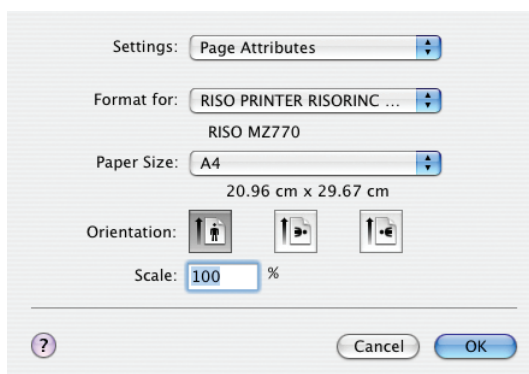
The selected document file data is then transmitted to your RISO printer and printed out there as specified in the previous step.

Register frequently used custom paper size

[Custom Paper Size] setting allows you to add a custom paper size to the register list. The paper size name, which has just been registered, is added to the custom paper size register list in the pull-down menu of the [Page Setup] dialog box. (See [page 45](#))

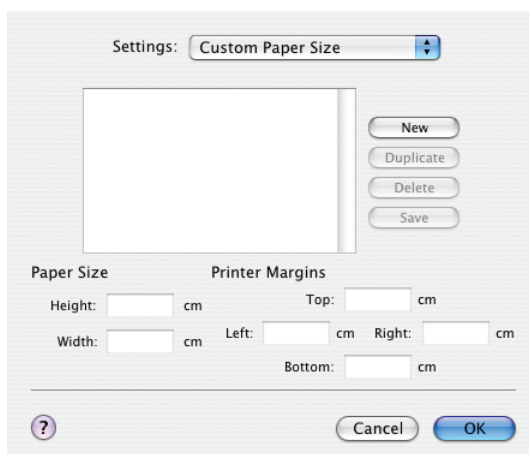
1

Open the [Page Setup] dialog box from the application software you are using.



2

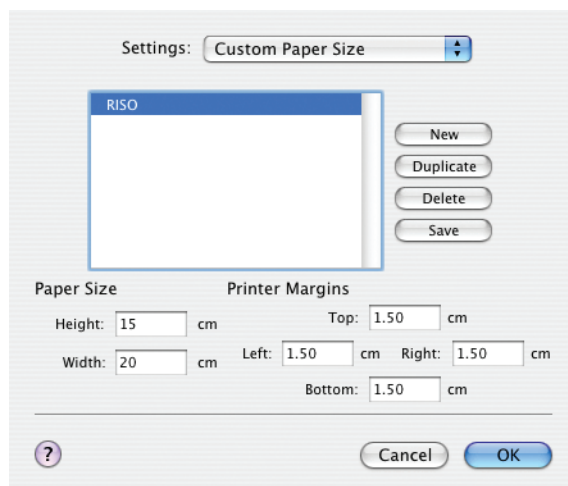
Select [Custom Paper Size] of the [Settings] pull-down menu to open the [Custom Paper Size] dialog box.



3

Click on the [New] button to add a custom paper size to the register list.

Enter the values in the fields [Name], [Paper Size], and [Printer Margins] for an added custom paper size.



- NOTE**
- If you register the paper size in horizontal direction, enter the value of longer side in the [Width] field and that of shorter side in the [Height] field.
 - Entry of the name and dimensions will help you when you select the paper size.
 - Paper size to be registered may vary depending on the printer model you use. Refer to the user's guide of your RISO printer for details.

4

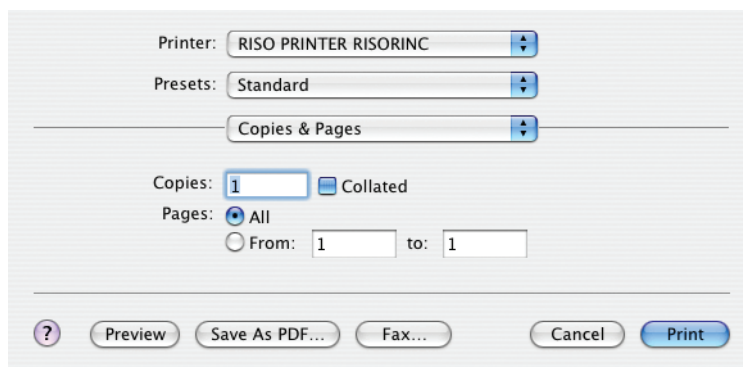
You can save the information of your customer paper size by clicking on the [Save] button.

Click on the [OK] button to close the dialog box.

Dialog Box Settings

Mac OS settings

Copies & Pages



Printer: RISO PRINTER RISORINC

Presets: Standard

Copies & Pages

Copies: 1 ☒ Collated

Pages: ☒ All
☐ From: 1 to: 1

? Preview Save As PDF... Fax... Cancel Print

You can set the number of copies and range of pages to be printed.

Copies

Enter the value for the number of copies to be printed.

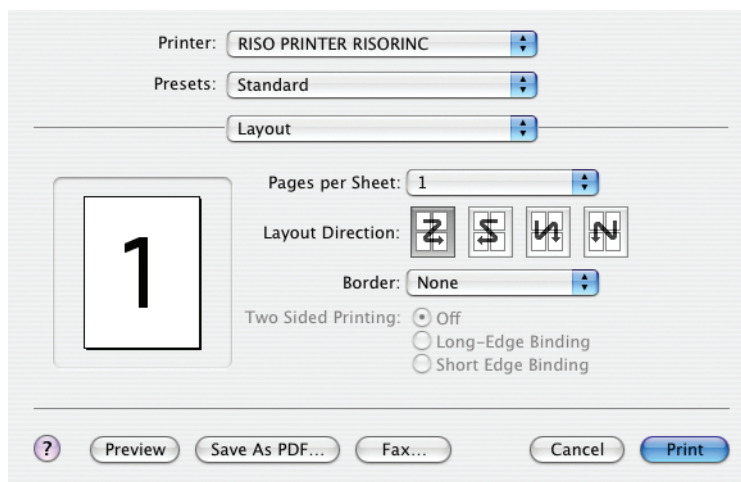
Collated

Never fail to deselect the [Collated] box when you use the RISO Printer Driver for printing.

Pages

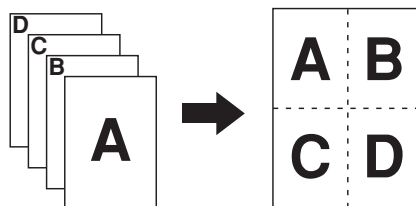
You can specify the range of pages to be printed.

Layout



This option allows you layout processing.

You can print the data of two or more pages on one sheet of paper.



Pages per Sheet

You can select the number of pages to be printed on one sheet of paper, from 1, 2, 4, 6, 9, or 16.

Layout Direction

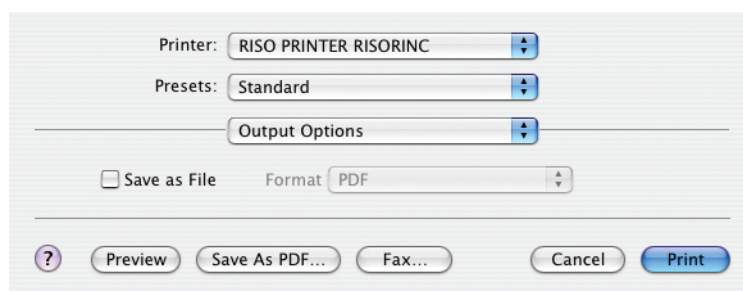
You can select page direction to be printed.

Border

This option allows you to draw the outline on the paper.

If you do not print the outline, select [None].

Output Options



You can specify whether the print data is to be directed to your RISO printer or to a file.

Save as File

Select this check box to redirect the print data to a file.

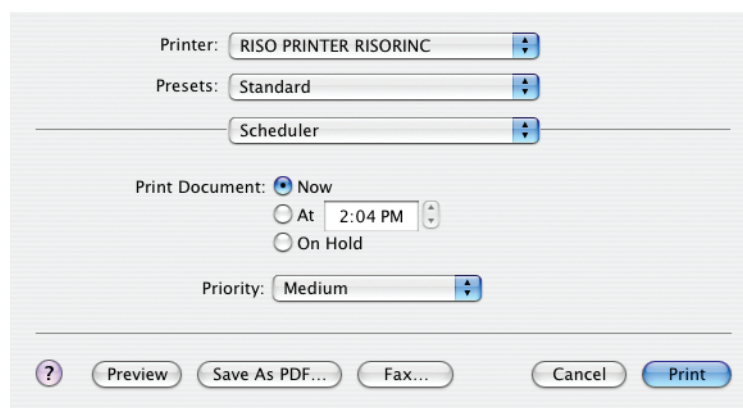
Format

Select the [Format] for choice between PDF and PostScript file.

Important!

You cannot create the RISORINC-format file.

Scheduler



You can specify the printing schedule.

Print Document

Now : The print command is sent immediately.

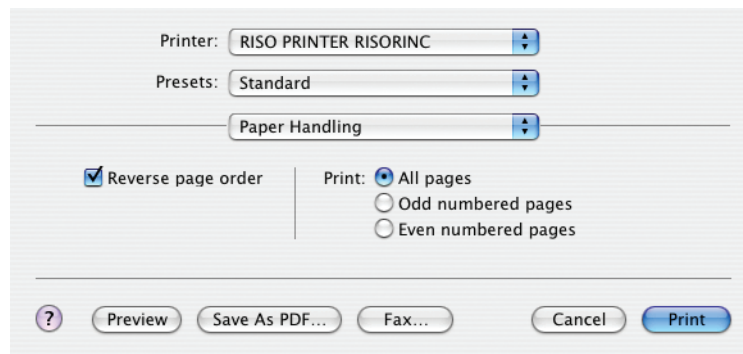
At : The data is to be printed at a specified time.

On Hold : Printing is reserved.

Priority

You can select priority of documents to be printed.

Paper Handling



You can select the printing order of pages and range of pages.

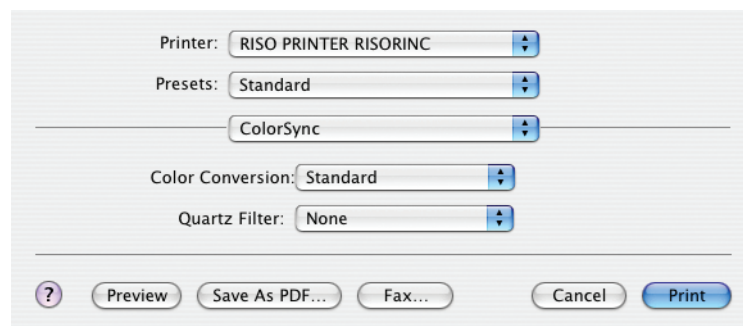
Reverse page order

If you select this check box, the document will be printed in inverse order.

Print

You can specify the range of pages to be printed.

Color Sync



You can determine the ColorSync settings.

Color Conversion

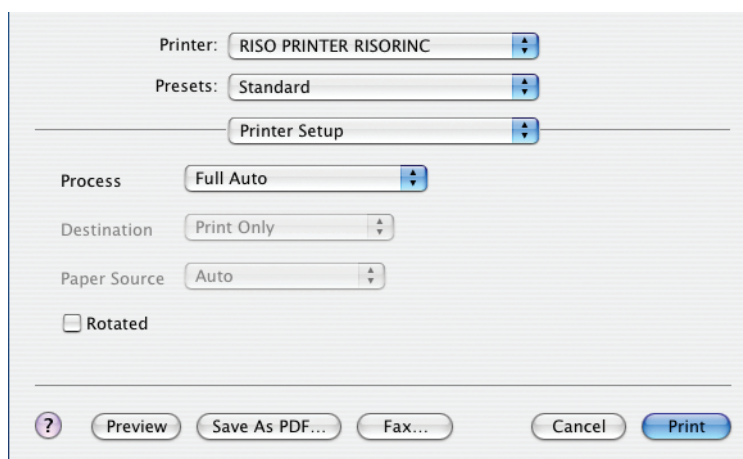
[Standard] is only available on the RISO Printer Driver.

Quartz Filter

Select [None] on the RISO Printer Driver.

Settings for photo image processing should be made on [Coloring] (See [page 56](#)) and [Photo processing] (See [page 62](#)) options.

Printer Setup



Process

You can specify how to process your print jobs on your RISO printer, i.e. to complete them without interruption or to interrupt them after a specified process step. By interrupting your print jobs, you can check print position and quality with test prints before printing process or change the print job flow according to your print requirements. Click on the [▼] bar and select a desired process flow from the displayed list. The available process flows are as follows :

Full Auto:

To complete print jobs without operator involvement on your RISO printer. No pause is made between master-making and printing processes until the end of print jobs.

Semi-Auto (Print):

To interrupt print jobs before each master-making process, thus allowing you to handle a stack of printed copies, especially for duplex printing. You can view the page image on the LCD of the printer to check what you are about to print.

Semi-Auto (Master):

To interrupt print jobs before each printing process, thus allowing you to check a sample print.

Manual:

To interrupt print jobs before each process step, i.e. both master-making and printing processes.

IMPORTANT!

[Process] is available only when you select [Print Only]. (See [page 54](#)) (The setting is not valid for [Storage Only].) For stored data, set the [Process] mode from the printer display when the data is activated.

Destination

■ The [Destination] is displayed only when your RISO printer is equipped with the storage memory (DM-128CF).

NOTE When you install the printer driver, open the [Properties] dialog box, and you can select the storage memory to be installed or not installed from the [Configuration] dialog box. (See [page 64](#))

Click on the [▼] bar to view the pull-down menu and select the destination.

Print Only

Send the data to your RISO printer, and start printing in the auto process. Stored data will be automatically erased after the print job is done.

Print & Storage

The print job is processed and the data is stored in the printer. You can reactivate the stored data on your RISO printer at anytime you like.

Storage Only

Send the data to your RISO printer to be stored. You can reactivate the stored data on your RISO printer at anytime you like.

Paper Source

This option is not available on the printer which you are using.

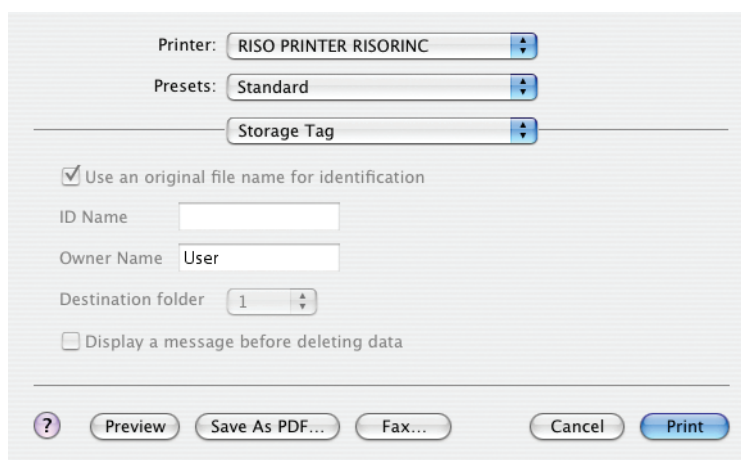
Rotated

You can rotate print images by 180 degrees by activating this option.

Important!

This option is also available on the control panel of your RISO printer. Make sure it is not activated on both sides at the same time. If it is, this option will be canceled.

Storage Tag



You can set additional information necessary for storing data. The information below will be stored together with the document data. Such information can be used to identify stored data.

■ This option is not displayed if you select [Print Only] in [Destination] pull-down menu. (See [page 54](#))

Use an original file name for identification:

Select the check box to automatically use an original file name for identification on the application software on which the document was created.

ID Name:

Enter ID name if you want to have any name different from one specified on the application software on which the document was created.

Owner Name:

You can enter the name of an administrator of stored data.

The default value is the computer user.

Destination Folder:

You can specify the folder in which the storage memory is saved.

Display a message before deleting data:

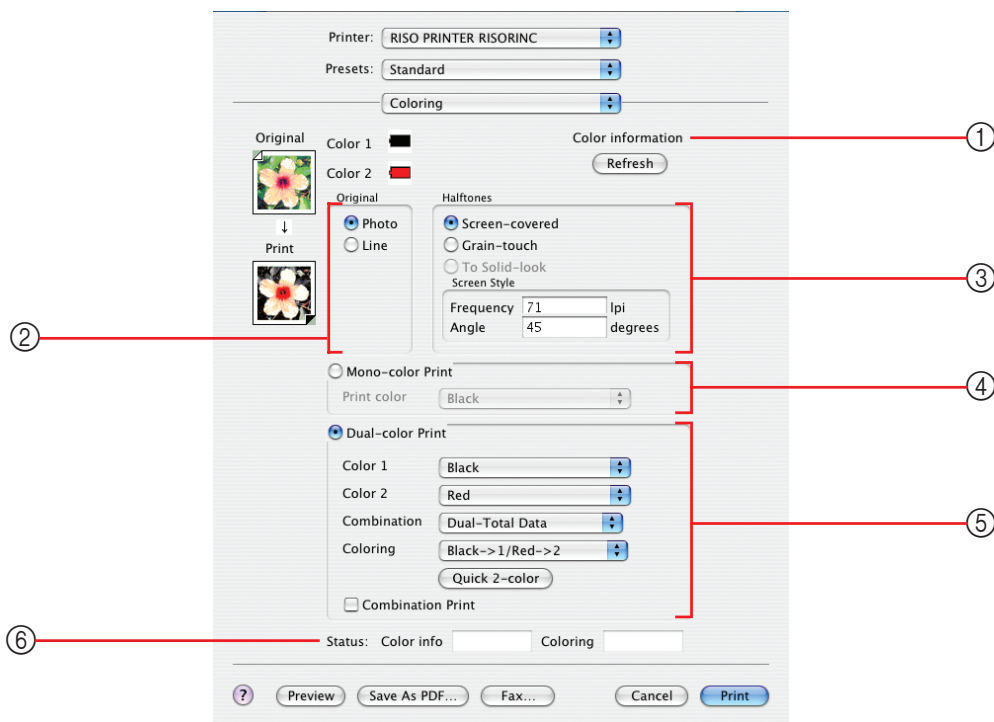
Select the check box to display a confirmation message on the control panel of your RISO printer before deleting stored data.

Important!

You are not allowed to use the prohibited characters as follows for [ID Name] and [Owner Name].

Prohibited characters : \ / ; , * ? " ' < > |

Coloring



① Color Information

② Original

Photo

Line

③ Halftones

Screen-covered

Grain-touch

To Solid-look

Screen Style

Frequency

Angle

④ Mono-color Print

Print Color

⑤ Dual-color Print

Color 1

Color 2

Combination

Coloring

Quick 2-color

Combination Print

⑥ Status

① Color Information

■ You must specify settings on [Color information reference] in advance. (See [page 65](#))

If you click on the [Refresh] button, the color information of the print color mounted on the printer is reflected on the printer driver. When detection is complete, it is displayed [Refreshed] in the [Refresh Status] field.

Important!

The command is not completed without the RISORINC-NET monitoring tool being activated.

② Original

You can select document types.

Photo

Click on the circle when the manuscript includes photo images.

Line

Click on the circle when the manuscript consists of texts and drawings.

③ Halftones

You can select grayscale and halftones for color photos.

You can view your choice on the sample image on the left.

Screen-covered

A halftone processing mode by changing the size of dots depending on the document print density. It is superior in halftone output, but reproduces finer images in inferior quality to [Grain-touch] mode.

Grain-touch

A halftone processing mode by determining printing per dot depending on the document print density. It enables to reproduce finer images, but the halftone quality is inferior to [Screen-covered].

To Solid-look

This mode makes all text solid-look. You can use this mode to express the text clearly. The difference of each text color cannot be expressed.

Screen-covered parameter can be set by selecting [Screen-covered].

Frequency

You can select the frequency of dots per inch (25.4 mm). You can select the value from 38 to 200. The default value is 71.

Angle

You can select the angle of dot direction so as to make adjustments against moire or other problems. You can select the value from 0 to 90. The default value is 45.

If you select dual-color print, enter the value of the angle for parts of the image printed by other colors than red (i.e. black, blue, green). The angle of dots for other parts of the image printed by red is automatically optimized.

④ Mono-color print

If you click on this circle, printing is done by only one cylinder (print drum).

Print Color

If the data is transmitted through the [Color information] command, the print color mounted on the Color 1 is automatically selected.

No data transmitted, manually select the print colors mounted on your RISO printer.

NOTE When mono-color print is selected, it is recommended to use the Color 1. However, if the selected color is set to Color 2 side, use the Color 2 for printing.

⑤ Dual-color Print

If you click on this circle, printing is done by two cylinders (print drums).

Important!

- **As for characters, numeral figures, and drawings, create the data using colors on fonts and lines.**
You do not have to select same colors as those mounted on your printer, but the data will be printed in two colors even if you use more than two colors on your document.
- **As for photo images, only color photos can be printed in two colors. If you want to print black-and-white photos, specify either [Color 1] or [Color 2].**

Color 1

Color 2

If the data is transmitted through the [Color Information] command, the print colors mounted on your RISO printer is automatically selected.

No data transmitted, manually select the print colors mounted on your RISO printer.

Combination

In using dual-color print, set the two cylinders (Color 1 & Color 2) either to Color 1 & 2 Data or to Print Only (using the present master).

Dual-Total Data : Master making and dual-color print are carried out with both cylinders (print drums).

Dual-Color 1 Data : Master making is carried out only in color 1 and the documentation data is printed out with both cylinders (print drums).

Dual-Color 2 Data : Master making is carried out only in color 2 and the documentation data is printed out with both cylinders (print drums).

Coloring

Options differ depending on your choice on [Original].

Photo :

Black->1/Red->2

Red->1/Black->2

Blue->1/Red->2

Red->1/Blue->2

Green->1/Red->2

Red->1/Green->2

Coloring Process reproduces colored photos in two colors.

Make your choices depending on print colors mounted on your RISO printer. Coloring Process is executed corresponding to the print colors mounted. You do not have to select the same colors as those mounted on your printer, but your choice will work for best results.

Line :

B&W->1/RGB->2

The colored sections of the text/line art are printed out in color 2 and the black (gray) sections are printed out in color 1.

RGB ->1/B&W->2

The colored sections of the text/line art are printed out in color 1 and the black (gray) sections are printed out in color 2.

Others->1/Red->2

Red, yellow and magenta sections of the text/line art are printed out in color 2 and blue, green and black sections are printed out in color 1.

Red ->1/ Others ->2

Red, yellow and magenta sections of the text/line art are printed out in color 1 and blue, green and black sections are printed out in color 2.

Quick 2-color

You can set the Quick 2-colour parameters on [Coloring] corresponding to the print colors (colours) mounted on your RISO printer.

NOTE If you select the [Auto Quick Dual-color] (See [page 64](#)) check box of [Configuration], the [Quick 2-color] command will automatically start as soon as [Color Information] is refreshed.

Combination Print

With combination print, the original data is automatically colored in two (on the assumption: color 1 of black and color 2 of red), the data is transmitted to your RISO printer and the master making is carried out. The printer will stop after master making is carried out. Use the combination print display in the printer control panel to set the number of the copies and press the start key.

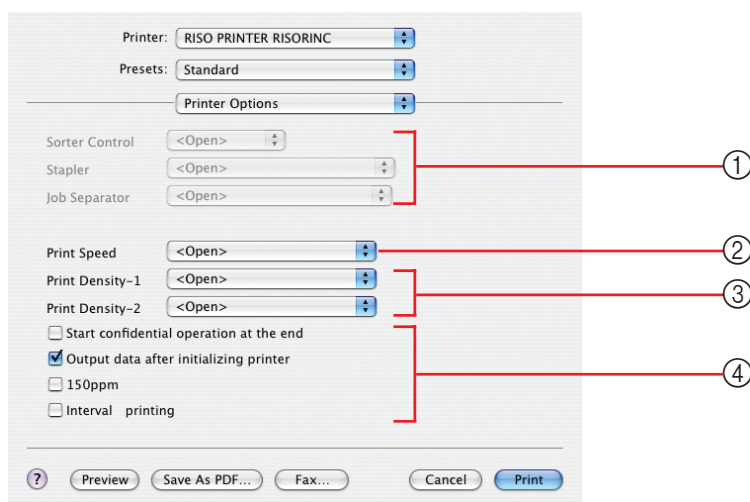
⑥ Status

It is displayed [Refreshed] if the data for [Color Information] or [Coloring] is refreshed by the functions such as [Color Information] and [Quick 2-color]. If the refresh is not complete, the fields remain empty.

Color info : You can view the refresh status of the [Color Information] function.

Coloring : You can view the refresh status of the [Quick 2-color] function.

Printer Options



Settings

① Configuration

Sorter Control
Stapler
Job Separator

② Print Speed

③ Print Density

④ Other options

Start confidential operation at the end
Output data after initializing printer
150ppm
Interval printing

① Configuration

- [Sorter Control] and [Stapler] commands are not available on the printer which you are using.
- [Job Separator] is displayed when you select the circle of [Installed] in the [Configuration] dialog box.

Job Separator

You can activate the job separator on your RISO printer and select the timing of separation tape insertion.

<Open> : Follow the present setting of your RISO printer.

OFF : No separation tape inserted.

ON-Between Documents : Insert separation tapes per job.

ON-Between Pages : Insert separation tapes per page.

NOTE Refer to the user's guide of the job separator for its functions and operations.

② Print Speed

You can select the print speed of your RISO printer. 5 levels of print speed are available. The factory-set speed level is “<Open>”, which lets your RISO printer operate at the speed level as specified on its own control panel.

③ Print Density

You can select the print density on your RISO printer. 5 levels of print density are available.

The factory-set density level is “<Open>”, which lets your RISO printer operate at the density level as specified on its own control panel.

For [Dual-color Print], select the print density on your RISO printer for cylinders (print drums) 1 and 2, respectively.

④ Other options

Start confidential operation at the end

You can prevent your confidential documents from being duplicated without your knowledge by selecting this check box. When this check box is selected, the remaining master is automatically replaced with a blank one after all specified print jobs are finished.

Output data after initializing printer

Your RISO printer is initialized before receiving print data when this check box is selected.

It is recommended to select this check box in most cases.

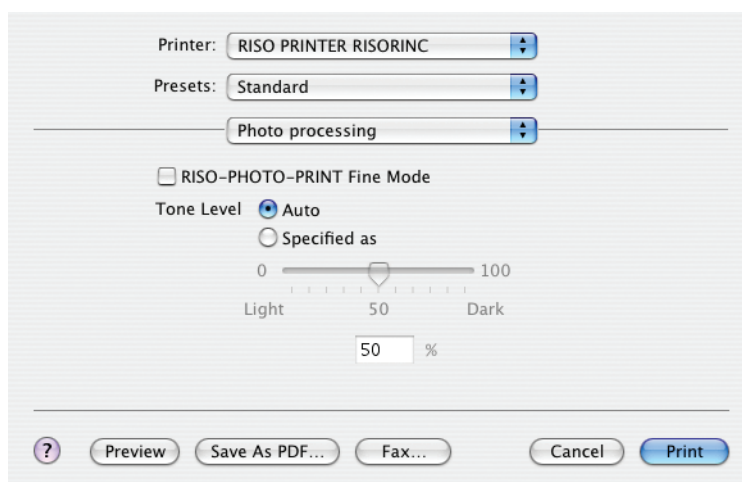
150 ppm

It allows high-speed printing.

Interval printing

By allowing the print cylinder (drum) to skip a rotation during printing and extend the printed paper ejection interval, the ink has time to dry, preventing it from leaving marks on the back of the next sheet.

Photo processing



You can specify the photo image processing mode.

This option is not displayed if you select [Line] in [Original] for the [Coloring] dialog box (See p.56).

RISO-PHOTO-PRINT Fine Mode

This image processing mode is originally developed by RISO, in order to reproduce photo images while keeping their original fineness as well as possible.

You can activate this mode by selecting the corresponding check box.

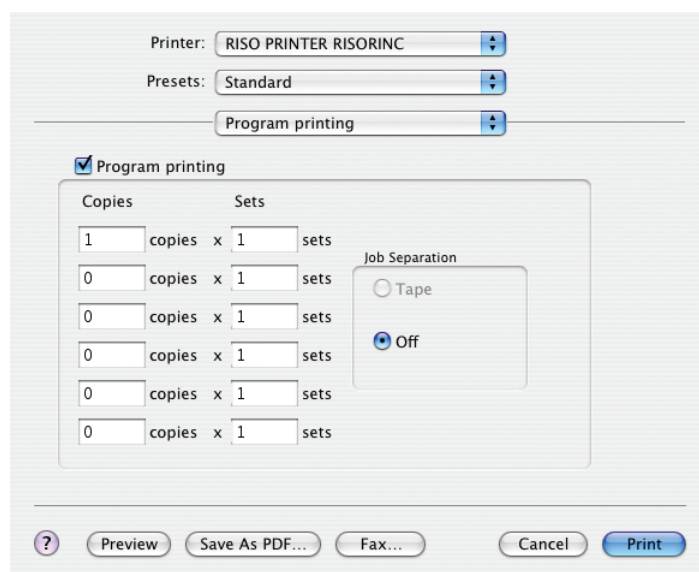
Tone Level

You can adjust the tone level of original photo images to obtain an optimum photo tone in prints.

Auto The tone level of original photo images is automatically adjusted to compensate for their tone unbalance.

Specified as The tone of original photo images can be changed according to your needs by shifting the pointer on the sliding bar or directly entering a desired value into the corresponding field. Shift the pointer toward "0%" if you want to make the photo tone lighter and toward "100%" if you want to make it darker. 100 steps of tone level are available. This option covers the whole job, not available in respective images.

Program Printing



Printing jobs are conducted in sets of copies. One set should contain at least one page.

Copies : Enter the value for number of pages per set to be printed.

Sets : Enter the value for number of sets to be printed.

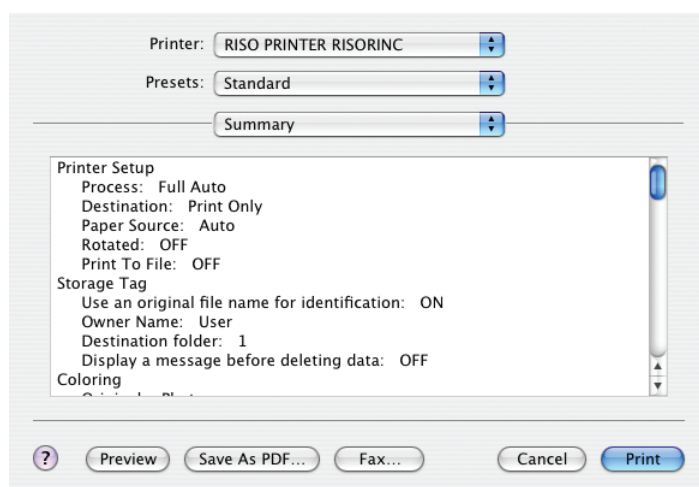
Job Separation

Tape : Job separation by separation tape insertion.

Off : No job separation conducted.

■ For job separation, optional job separator should be mounted on your RISO printer.

Summary



You can view the settings at a glance.

Changing the Printer Driver Configuration

You are required to change the configuration of the installed printer driver program if your RISO printer is equipped with optional devices such as sorter and colors.

Settings for Auto Quick Dual-color and auto detection of color information are also available.

Configuration

Printer: RISO PRINTER RISORINC

Presets: Standard

Configuration

Sorter: Not Installed

Job Separator: ☐ Installed ☒ Not Installed

Storage Memory: ☐ Installed ☒ Not Installed

Multi-tray Feeder: ☐ Installed ☒ Not Installed

☒ Auto Quick Dual-color

Color information: ☒ Auto detection

? Preview Save As PDF... Fax... Cancel Print

■ You cannot select this option without any optional devices connected.

Sorter This option is not available on the printer which you are using.

Job Separator Select [Installed] if your RISO printer is equipped with the Job Separator.

Storage Memory Select [Installed] if your RISO printer is equipped with DM-128CF.

Multi-tray Feeder This option is not available on the printer which you are using.

Auto Quick Dual-color

If you select this check box, the Dual-color Print for [Coloring] dialog box will be [Quick 2-color] when you update the color information.

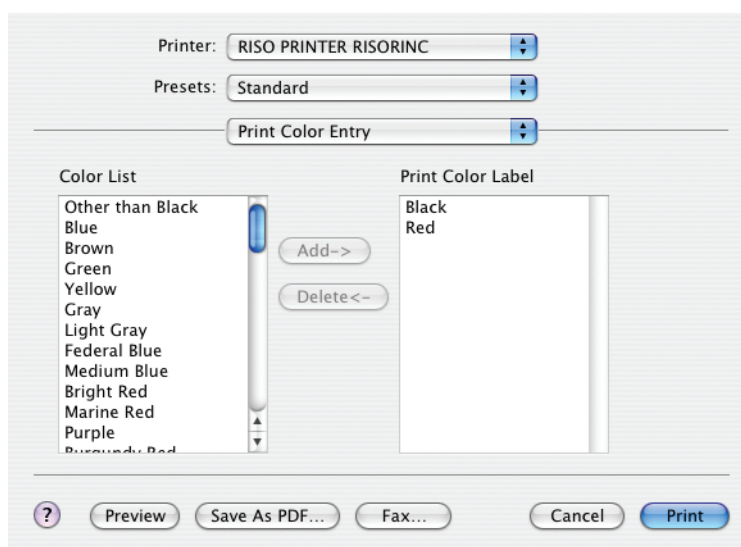
Color information

Make your choice for auto detection of color information.

Check box selected : Detection of the color information of the print color mounted on the printer is made every time you open the [Coloring] dialog box to reflect the information on the [Color Label] for the printer driver.

Check box not selected : Color information is updated only when you click on [Refresh] button of the [Coloring] dialog box.

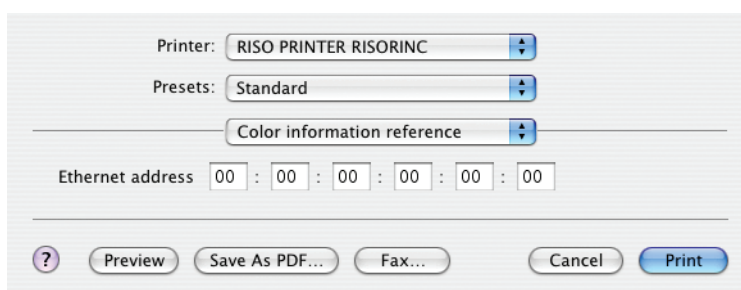
Print Color Entry



Register the print colors you have on your RISO printer.

The print colors registered are displayed in the [[Print Color] [Color 2] [Color 1]] pull-down menu in the [Color-ing] dialog box.

Color information reference



You need to make an entry for this field when detection is made for the color information of the cylinder (print drum) mounted on the printer.

Ethernet address

Enter the Ethernet address of your RISO printer which is connected.

NOTE Refer to the RISORINC-NET monitoring tool for Ethernet address of your RISO printer.



Appendix

Troubleshooting Tips	68
Error Message on PC's Display	68
Operation Problems	69

Troubleshooting Tips

Error Message on PC's Display

Take actions as given below if the following error messages appear in the PC's display.

Message	Description and Action
The printer is not ready for printing. (The device is not ready.)	<ul style="list-style-type: none">❑ This message appears when your RISO printer requires paper or it is not connected to your computer properly. Action Replenish paper or check your RISO printer and the printer cable for poor connection, and then restart printing.❑ This message also appears when the memory of your RISO printer becomes full during data transmission because the size of the document data concerned is too large. Action Reduce the file size of the document data concerned or increase the value of the [Timeout] setting in your computer system, and then restart printing.
Cannot print because an error is found in the current printer settings.	<ul style="list-style-type: none">❑ This message appears if the printer settings (paper size, print orientation, etc.) in the application software and the printer driver do not match. Action Change the printer settings in the application software to make them identical with those in the printer driver or vice versa.

Operation Problems

Check your system setup as given below if you encounter the following operation problems. Contact your service representative for help if you cannot solve the problem.

No Printout_____

Problem

Your RISO printer is not receiving data from your computer even after the print job finishes in the application software.

Cause / Condition and Action

- ☐ Your computer is not securely connected to your RISO printer.

Action Connect the printer cable (or network cable) to both your computer and your RISO printer securely.

- ☐ The [RISO...] printer driver is not selected.

Action Select it and reprint.

- ☐ [Printing] is displayed as the printer status when you open the [RISO...] printer monitor window.

Action Wait until the printer status display changes in the [RISO...] printer monitor window.

Problem

Your RISO printer cannot finish processing the current document data.

Cause / Condition and Action

- ❑ The printer cable (or network cable) was removed just after a print job started in the application software. ([Printing] is displayed when you open the [RISO...] printer monitor window in this case.)

Action > Reconnect the cable and cancel the current job in the [RISO...] printer monitor window. Then turn off the main power switch of your RISO printer. After approximately 10 seconds, turn it on again.

- ❑ [Pause] is displayed as the printer status when you open the [RISO...] printer monitor window.

Action > Click on the [Restart] in the [Document] menu in the [RISO...] printer monitor window.

- ❑ The printer settings (paper size, print orientation, etc.) in the application software and in the printer driver do not match.

Action > Change the printer settings in the application software to make them identical with those in the printer driver or vice versa, and repeat the print job from the application software.

- ❑ The print job has been canceled before completion in the application software on your computer.

Action > Turn off the main power switch of your RISO printer. After approximately 10 seconds, turn it on again.

Your RISO printer won't start making master when the documentation data is transmitted from your computer or your RISO printer won't start printing after making master.

- ❑ If you set the [Process] to a setting other than "Full-auto", the process stops in operation in order to wait for instructions.

Action > Press Start key on your RISO printer. The next process starts.

Unexpected Print Result

Problem	Cause / Condition and Action
Graphics cannot be printed properly.	<ul style="list-style-type: none"><input type="checkbox"/> The current [RISO...] printer driver was not selected as active when editing graphics. Action Select the current [RISO...] printer driver and edit graphics again because graphics may not be printed properly if they are edited with another printer driver selected.<input type="checkbox"/> The specified custom paper size was so large that unexpected margins were assigned on a page. Action Select another paper size or specify the custom paper size within the valid range.
Images are reduced unexpectedly.	<ul style="list-style-type: none"><input type="checkbox"/> Do you use the printer driver corresponding to your RISO printer? Action If the name of your RISO printer is different from the model name of your printer driver, the document data cannot be printed out correctly.
Some fonts cannot be printed properly.	<ul style="list-style-type: none"><input type="checkbox"/> The [Use Printer Font] option is selected in the application software. Action Cancel the [Use Printer Font] option in the application software.
The page image is not centered or is clipped at an edge.	<ul style="list-style-type: none"><input type="checkbox"/> The paper size setting in the application software is not identical with that in the printer driver. Action Make both paper size setting identical.<input type="checkbox"/> The print area specified in the application software is beyond the maximum print area of your RISO printer. Action Increase the border margins in the application software to contain the page image within the printable area of your RISO printer.<input type="checkbox"/> There is something wrong with the Print cylinder (drum) in your RISO printer. Action Check your RISO printer, referring to the dedicated user's guide.

Unexpected Action _____

Problem	Cause / Condition and Action
Your RISO printer repeats the master-making process for each copy of the identical page.	<ul style="list-style-type: none">❑ The [Collate] check box is selected in the [Print] dialog box in the application software. <p>Action > Cancel the current print job on your computer and turn off the main power switch of your RISO printer. After approximately 10 seconds, turn it on again. Always cancel the [Collate Copies] or [Collate] option in the [Print] dialog box when starting a print job.</p>
Your RISO printer does not operate as specified in the [Sorter Control] option in the printer driver.	<ul style="list-style-type: none">❑ The finishing job specified in the [Sorter Control] option is not available for the current combination of your RISO printer and an optional sorter. <p>Action > Refer to the dedicated user's guides of your RISO printer and the optional sorter.</p>
Your RISO printer cannot print at the speed specified in the [Print Speed] option in the printer driver.	<ul style="list-style-type: none">❑ The print speed remains constant when a certain mode is selected in the [Sorter Control] option in the printer driver, for your RISO printer which is equipped with a certain type of optional sorter. <p>Action > Refer to the corresponding page for detailed description about the [Sorter Control] option. (Windows - page 37, Mac OS - page 60)</p>

Unable to Specify Settings _____

Problem	Cause / Condition and Action
A name cannot be entered in the dialog box to register the custom paper size. (Windows)	<ul style="list-style-type: none"><input type="checkbox"/> The name is too long for the corresponding field.Action Valid range of the length is 30 characters.
A desired value cannot be entered in the corresponding fields to register the custom paper size.	<ul style="list-style-type: none"><input type="checkbox"/> The value does not fall within the range.Action Enter the value within the valid ranges into the relevant fields.
The custom paper size cannot be registered in the [RISO...] printer driver.	<ul style="list-style-type: none"><input type="checkbox"/> The relevant dialog box was not closed correctly.Action Add the desired custom paper size in the relevant dialog box ([Custom Paper List] for Windows or [Paper Editor] for Macintosh) once more, and then click on the [OK] or [Save] button before closing the dialog box. (Windows - page 39, Mac OS - page 47)
The specified custom paper size cannot be selected in the application software.	<ul style="list-style-type: none"><input type="checkbox"/> [Custom] is not selected in the [Paper Size] option in the [Properties] dialog box of the printer driver.Action Select [Custom] in the [Paper Size] option.<input type="checkbox"/> [Paper Size: Custom] cannot be selected in the [Printer Setup] dialog box in the application software.Action Specify a standard paper size which is larger than the specified custom one.

