



World Leaders

IN MAILROOM TECHNOLOGY



Automailer **5** *Plus*

Automailer 5

Plus

High Volume Production Mailing System



PFE's Automailer 5 offers total flexibility in mail processing from a few hundred letters per day, to consistent, around-the-clock production. Almost any system configuration is available, from a simple 2-station machine to a highly sophisticated 16-station installation, incorporating all of PFE's technical knowledge and expertise.

The Automailer 5 is considerably quieter than other production mailing machines, fitting perfectly into an office environment or a full-scale, production mailing area. Its low noise level guarantees that, wherever it is situated, it can operate at full capacity with minimal disturbance to the everyday working environment.

Automatic Settings with Programmability

The Automailer 5 is revolutionary in terms of programmability. Its unique, state-of-the-art, User Interface, once programmed, will automatically control all mail jobs, machine settings and adjustments, with minimal operator intervention.

Feeders and Folders

The Automailer 5 system is entirely modular, allowing feeders and folders to be fitted at any station. The feeders are capable of handling a wide range of materials from individual sheets to booklets.

The 3-plate folders can process documents in all normal fold styles and with any address position.

All stations on the Automailer 5 are loaded and operated from the rear of the machine, increasing ease of use.

Double Document Detection

The automatic double document detection system fitted in each feeder and folder ensures that not more than one copy of the required document is put into each envelope.

Document Integrity

Integrity of the document is ensured at all times with the system's capability of tracking and monitoring at any position throughout the machine.

On-Line Cutter

Continuous stationery forms can be processed using an on-line cutter.



User Interface

The Automailer 5 has a sophisticated graphical user interface, which allows jobs, machine set-ups, barcode and OMR programmes to be pre-set and then called up at the touch of a button.

On-screen diagnostic and management information is clearly displayed and can be accessed over a network if required.

A touch-screen monitor, and an RF remote control unit are available as options.



Output and Conveyor

Envelope ejection on the Automailer 5 is smooth and reliable. Envelopes are ejected face-upwards, enabling total on-line connectivity to a number of output options, such as addressing systems and franking units. The orientation of the envelope also allows for ink marking prior to eject.

The Automailer 5 is equipped with a high-capacity, envelope conveyor unit which ensures efficient stacking of filled envelopes on output from the machine. Other available Conveyor options include an Adjustable Height Conveyor, a Postage Meter Interface, Envelope Diverts and a Dual Conveyor.



High Capacity Sheet Feeder

The Automailer 5's high-capacity sheet feeder can hold up to 5,000 sheets of paper, ranging from 70-120 gsm. It can be fitted with extractable, mobile Paper Bins, which can be easily changed or re-loaded in a matter of seconds. Fast and efficient machine loading is simple and ensures that production levels are maintained at an optimum at all times. All sheet feeders are friction-fed and fully modular, allowing for virtually any system configuration.

A fixed Low Capacity Sheet Feeder is also an option and can hold up to 2000 sheets of paper.



Insert Feeders



The Insert Feeders on the Automailer 5 offer flexibility and feed reliability, regardless of the insert type. A range of feed mechanisms are available, giving the user the option of selecting the most appropriate, according to their material specifications. Rollers

can be removed quickly and easily, allowing access to the machine should maintenance be required.

With a maximum insert thickness of 4mm, a wide range of mailing documentation can be easily processed through the Automailer 5. All Insert Feeders can be loaded whilst the machine is still running, guaranteeing consistent and non-stop output.



Sealing System

The Automailer 5's pump fed, sealing system guarantees perfectly sealed envelopes every time. Its high capacity, 5 litre water tank ensures minimal operator intervention, but when necessary can be easily removed and refilled. The Automailer 5's in-built intelligent system can additionally be programmed to selectively seal or unseal envelopes as required.

PFE also supply envelope-sealing fluid, which is specially formulated to guarantee optimum sealing performance.



Paper Track

The Automailer 5's Paper Track guarantees total document integrity at all times. Form flow is monitored and tracked at each stage, ensuring consistent and accurate collation and insertion.

Quiet stepper motors individually drive each track section and in-built sensors provide maximum control over document flow from unit to unit.

Again the Paper Track is designed with ease-of-access in mind, allowing operators to carry out machine maintenance, quickly and efficiently, should it be required.



Insertion

The materials used in mail processing can vary and are not always identical in size,

shape and weight. To ensure efficient document insertion, the stepper controlled insert fingers can be adjusted automatically via the User Interface.

This gives the operator



complete control of the insertion process without the need for any manual adjustments that may be

necessary when processing a variety of different materials.

The Automailer 5 can handle an impressive insert pack thickness, of up to 8mm. Flexibility again is the key, allowing you to fulfil more complex and diverse mailings across a wider range of configurations.



advanced features



PFE's Intelligent System Technology

The intelligent mailing system starts with a series of computer generated recognition marks printed on the prime document. Either OMR (Optical Mark Recognition), BCR (Barcode Recognition) or OCR (Optical Character Recognition) are programmed for individual customers so each mailing is personal to the addressee.

A sheet feeder or cutter with an OMR/barcode reader can then command the Automailer 5 system to perform various functions:

Grouping Forms

If more than one page is to be inserted into one envelope they will be grouped together in the accumulator and passed to the folder simultaneously.

Diverting Forms

If any form does not need to be inserted it can be diverted. Documents can be individually programmed to divert to the customer's specific requirements.

Selective Feeding

When additional inserts, apart from the prime document, are to be added to the envelope, these can be varied from one recipient to another. OMR/barcode marks select the appropriate inserts to enclose to any addressee.

Matching

Automailer 5 systems can also match a second personalised document with the document from the prime station.

Ink Marking

Filled envelopes may be marked to identify envelopes which require special handling. For example, to differentiate post code groups thereby maximising postal discounts.

Document Security

Cut sheet forms can be sequentially coded so the system can instantly recognise if a form is out of sequence, thus ensuring that individual forms are not lost or inserted into the wrong envelope.

Additionally, the electronic double detection system, fitted on all feed units, is also fitted to the Intelligent Sheet Feeder.

Accumulator

Invoices, Statements and other documents of variable quantities, can be processed securely and accurately through the Accumulator.

The Accumulator can be fed by either the High or Low Capacity Sheet Feeders or by on-line guillotines for the processing of continuous stationery.

An average of 3 sheets can be grouped and folded without affecting the overall machine speed and a total of up to 8 sheets can be grouped together and folded simultaneously.

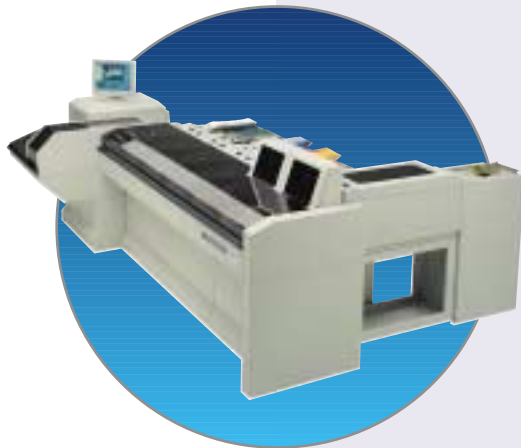
Internal divert units can be fitted to the Accumulator for the purpose of removing documents from the mailstream, such as nil-balance invoices and internal mail items. This is controlled by either the OMR, BCR or OCR programming.



The **NEW**

Automailer 5 *Plus+*

**High volume
Production Mailing
System**



Technical Specifications

INSERTING HEAD

Envelope Size: Depth: 4" - 6¹/₂" (102mm - 165mm)
Width: 6" - 9¹/₂" (152mm - 241mm)
Insert Pack Thickness: ⁵/₁₆" (8mm)
Cycle Speed: 8000 cycles per hour

INSERT FEEDER

Material Size: Depth: 3" - 6" (76mm - 152mm)
Width: 5¹/₂" - 9" (140mm - 228mm)
Minimum Weight: Single sheet - 70gsm
Maximum Thickness: Booklet - ⁵/₃₂" (4mm)

FOLDER

Fold Length: Fold 1 - No fold or 3" - 9³/₄" (75mm - 247mm)
Fold 2 - No fold or 3⁵/₁₆" - 6¹/₂" (92mm - 165mm)
Fold 3 - No fold or 3" - 6³/₄" (75mm - 171mm)
Material Size: Depth: Up to 16" (406mm)
Width: 5¹/₂" - 9" (140mm - 228mm)
Weight: 60gsm - 120gsm single sheet
up to 8 sheets 80gsm collated

ACCUMULATOR

Material Size: Depth: 7" - 16" (178mm - 406mm)
Width: 5⁸/₁₀" - 8¹/₂" (148mm - 216mm)
Weight: 70gsm - 120gsm

DIMENSIONS

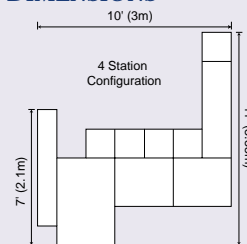


Diagram shows 4-station configuration with *IS* Accumulator. Every 2-station module adds 31¹/₂" (800mm).

Width Dimensions:

4-Station - 10' (3m) 6-Station - 12' 7¹/₂" (3.8m)
8-Station - 15' 3" (4.6m) 10-Station - 17' 10¹/₂" (5.4m)
12-Station - 20' 6" (6.2m) 14-Station - 23' 1¹/₂" (7m)
16-Station - 25' 9" (7.8m)

PFE PRODUCT RANGE

Mailing Machines
Desktop Mailing Systems
Office Mailing Systems
Modular Mailing Systems
Mail Printing Systems

• **Forms Handling Machines**

• **Office Products**



World Leaders

IN MAILROOM TECHNOLOGY

PFE International Limited,
Oakwood Hill Industrial Estate, Oakwood Hill, Loughton
Essex IG10 3TZ

Internet Address: www.pfe.co.uk

E-Mail: marketing@pfe.co.uk Tel: (020) 8502 1011 Fax: (020) 8502 4187

Subsidiary Companies in USA, France, Germany, Portugal, Belgium, Eire and Singapore. Sales Offices throughout the UK.

PFE's policy is one of continuous improvement, and the right is reserved to modify or alter equipment specifications, without prior notice.



1997
THE QUEEN'S AWARD FOR
EXPORT ACHIEVEMENT



CERTIFICATE No: FM 30804



INVESTOR IN PEOPLE